

## NCR2 Polyclonal Antibody

**catalog number: E-AB-13122**

**Note:** Centrifuge before opening to ensure complete recovery of vial contents.

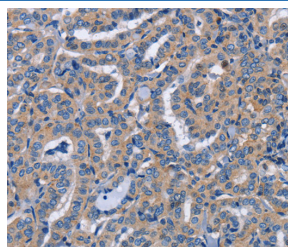
### Description

<b>Reactivity</b>	Human
<b>Immunogen</b>	Synthetic peptide of human NCR2
<b>Host</b>	Rabbit
<b>Isotype</b>	IgG
<b>Purification</b>	Affinity purification
<b>Buffer</b>	Phosphate buffered solution, pH 7.4, containing 0.05% stabilizer and 50% glycerol.

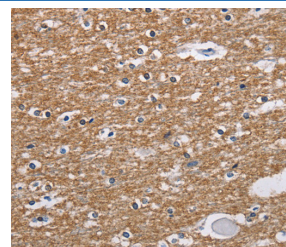
### Applications Recommended Dilution

<b>IHC</b>	1:50-1:200
------------	------------

### Data



Immunohistochemistry of paraffin-embedded Human thyroid cancer tissue using NCR2 Polyclonal Antibody at dilution 1:60



Immunohistochemistry of paraffin-embedded Human brain tissue using NCR2 Polyclonal Antibody at dilution 1:60

### Preparation & Storage

<b>Storage</b>	Store at -20°C Valid for 12 months. Avoid freeze / thaw cycles.
<b>Shipping</b>	The product is shipped with ice pack, upon receipt, store it immediately at the temperature recommended.

### Background

Natural cytotoxicity triggering receptor 2 is a protein that in humans is encoded by the NCR2 gene. NCR2 has also been designated as CD336 (cluster of differentiation 336). NKp44 is a natural cytotoxicity receptor that is expressed on IL-2-activated human NK cells and may contribute to the increased efficiency of NK cells to mediate tumor cell lysis. NKp44 is composed of one Ig-like extracellular domain, a transmembrane segment, and a cytoplasmic domain. Prolactin up-regulates and cortisol down-regulates the surface expression of NKp44 at the transcriptional level. A cellular ligand for NKp44 (NKp44L) is expressed during HIV-1 infection and is correlated with the progression of CD4+ T cell depletion and an increase of viral load.

### For Research Use Only