

## Recombinant Lysozyme Monoclonal Antibody

catalog number: **AN301868L**

**Note:** Centrifuge before opening to ensure complete recovery of vial contents.

### Description

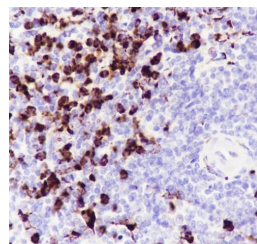
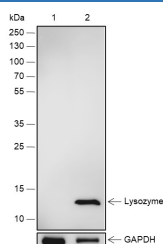
<b>Reactivity</b>	Human;
<b>Immunogen</b>	Recombinant human Lysozyme fragment
<b>Host</b>	Rabbit
<b>Isotype</b>	IgG, $\kappa$
<b>Clone</b>	A580
<b>Purification</b>	Protein A purified
<b>Buffer</b>	PBS, 50% glycerol, 0.05% Proclin 300, 0.05% protein protectant.

### Applications

### Recommended Dilution

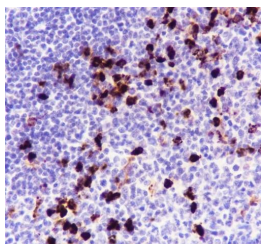
<b>WB</b>	1:500-1:2000
<b>IHC</b>	1:200-1:1000
<b>IP</b>	1:50-1:100

### Data

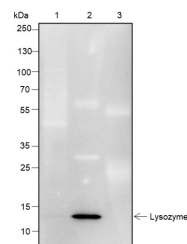


Western Blot with Lysozyme Monoclonal Antibody at dilution of 1:2000. Lane 1: HeLa (Negative control), Lane 2: THP-1 using Lysozyme Monoclonal Antibody at dilution of 1:1000.

**Observed-MW:13 kDa**  
**Calculated-MW:17 kDa**



Immunohistochemistry of paraffin-embedded Human tonsil using Lysozyme Monoclonal Antibody at dilution of 1:1000.



Immunoprecipitation analysis using anti-Lysozyme Monoclonal Antibody. Western blot was performed from the immunoprecipitate using Lysozyme Monoclonal Antibody at a dilution of 1:100. Lane 1: 5% Input, Lane 2: Lysozyme Monoclonal Antibody, Lane 3: Rabbit monoclonal IgG

Isotype

**Observed-MW:13 kDa**  
**Calculated-MW:17 kDa**

### Preparation & Storage

<b>Storage</b>	Store at -20°C Valid for 12 months. Avoid freeze / thaw cycles.
<b>Shipping</b>	Ice bag

### For Research Use Only

## Background

Lysozyme belongs to the glycosyl hydrolase 22 family. It catalyzes the hydrolysis of the bacterial cell wall beta glycosidic linkages between N-acetylmuramic acid and N-acetylglucosamine. In tissues and body fluids this protein is associated with the monocyte-macrophage system and enhance the activity of immunoagents.

---

### For Research Use Only

Toll-free: 1-888-852-8623  
Web: [www.elabscience.com](http://www.elabscience.com)

Tel: 1-832-243-6086  
Email: [techsupport@elabscience.com](mailto:techsupport@elabscience.com)

Fax: 1-832-243-6017

Rev. V1.1