

## Recombinant Claudin 1 Monoclonal Antibody

catalog number: **AN300979L**

**Note:** Centrifuge before opening to ensure complete recovery of vial contents.

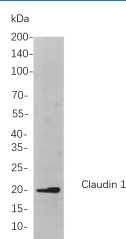
### Description

|                     |   |
|---------------------|---|
| <b>Reactivity</b>   | Human;Mouse;Rat   |
| <b>Immunogen</b>    | Recombinant Human Claudin 1 protein                             |
| <b>Host</b>         | Rabbit  |
| <b>Isotype</b>      | IgG, $\kappa$   |
| <b>Clone</b>        | B730  |
| <b>Purification</b> | Protein A   |
| <b>Buffer</b>       | PBS, 50% glycerol, 0.05% Proclin 300, 0.05% protein protectant. |

### Applications

| Applications | Recommended Dilution |
|--------------|----------------------|
| IHC          | 1:200-1:1000         |
| WB           | 1:1000-1:5000        |
| IF           | 1:200-1:1000         |
| ELISA        | 1:5000-1:20000       |
| IP           | 1:50-1:200,          |

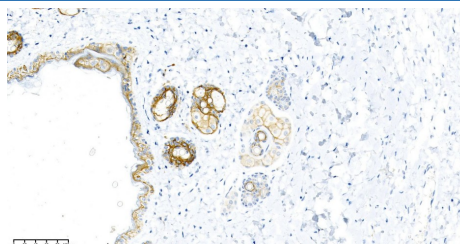
### Data



Western Blot with Recombinant Claudin 1 Monoclonal Antibody at dilution of 1:1000 dilution. Lane A: HepG2 cells.

**Observed-MW:19 kDa**

**Calculated-MW:22 kDa**



Immunohistochemistry of paraffin-embedded mouse mammary gland using Recombinant Claudin 1 Monoclonal Antibody at dilution of 1:200.

### Preparation & Storage

|                 |   |
|-----------------|---|
| <b>Storage</b>  | Store at -20°C Valid for 12 months. Avoid freeze / thaw cycles. |
| <b>Shipping</b> | Ice bag   |

### Background

Tight junctions represent one mode of cell-to-cell adhesion in epithelial or endothelial cell sheets, forming continuous seals around cells and serving as a physical barrier to prevent solutes and water from passing freely through the paracellular space. These junctions are comprised of sets of continuous networking strands in the outwardly facing cytoplasmic leaflet, with complementary grooves in the inwardly facing extracytoplasmic leaflet. The protein encoded by this gene, a member of the claudin family, is an integral membrane protein and a component of tight junction strands. Loss of function mutations result in neonatal ichthyosis-sclerosing cholangitis syndrome.

### For Research Use Only

Toll-free: 1-888-852-8623  
Web: [www.elabscience.com](http://www.elabscience.com)

Tel: 1-832-243-6086  
Email: [techsupport@elabscience.com](mailto:techsupport@elabscience.com)

Fax: 1-832-243-6017

Rev. V1.2