

Recombinant Catalase Monoclonal Antibody

catalog number: **E-AB-81542**

Note: Centrifuge before opening to ensure complete recovery of vial contents.

Description

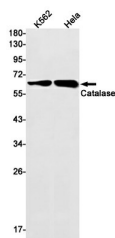
Reactivity	Human;Mouse;Rat
Immunogen	A synthetic peptide of human Catalase
Host	Rabbit
Isotype	IgG
Clone	R01-8B2
Purification	Affinity Purified
Buffer	50mM Tris-Glycine(pH 7.4), 0.15M NaCl, 40% Glycerol, 0.05% stabilizer and 0.05% protective protein.

Applications

Recommended Dilution

WB	1:500-1:1000
IHC	1:50-1:100

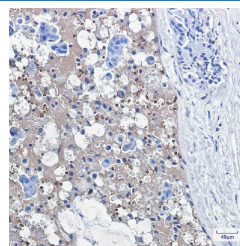
Data



Western blot detection of Catalase in K562, HeLa cell lysates using Catalase Rabbit mAb (1:1000 diluted). Predicted band size: 60 kDa. Observed band size: 60 kDa.

Observed-MW: 60 kDa

Calculated-MW: 60 kDa



Immunohistochemistry of Catalase in paraffin-embedded Human breast cancer tissue using Catalase Rabbit mAb at dilution 1:100

Preparation & Storage

Storage	Store at -20°C Valid for 12 months. Avoid freeze / thaw cycles.
Shipping	The product is shipped with ice pack, upon receipt, store it immediately at the temperature recommended.

Background

This gene encodes catalase, a key antioxidant enzyme in the body's defense against oxidative stress. Catalase is a heme enzyme that is present in the peroxisome of nearly all aerobic cells. Catalase converts the reactive oxygen species hydrogen peroxide to water and oxygen and thereby mitigates the toxic effects of hydrogen peroxide. Oxidative stress is hypothesized to play a role in the development of many chronic or late-onset diseases such as diabetes, asthma, Alzheimer's disease, systemic lupus erythematosus, rheumatoid arthritis, and cancers.

For Research Use Only