

Angiotensinogen Polyclonal Antibody

catalog number: **E-AB-40478**

Note: Centrifuge before opening to ensure complete recovery of vial contents.

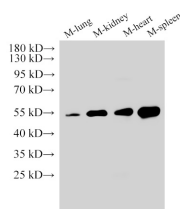
Description

Reactivity	Mouse;Rat
Immunogen	Recombinant Mouse Angiotensinogen protein
Host	Rabbit
Isotype	IgG
Purification	Antigen Affinity Purification
Buffer	PBS with 0.05% Proclin300, 1% protective protein and 50% glycerol, pH7.4

Applications

Applications	Recommended Dilution
WB	1:2000-1:5000
IHC	1:100-1:300

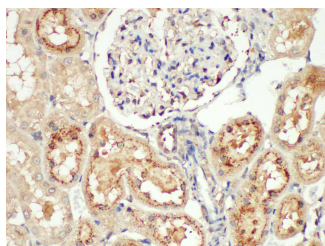
Data



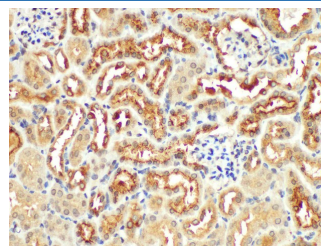
Western Blot analysis of 1)Mouse lung, 2)Mouse kidney, 3)Mouse heart, 4)Mouse spleen using Angiotensinogen Polyclonal Antibody at dilution of 1:3000.

Observed-MW:52 kDa

Calculated-MW:52 kDa



Immunohistochemistry of paraffin-embedded Rat kidney using Angiotensinogen Polyclonal Antibody at dilution of 1:200.



Immunohistochemistry of paraffin-embedded Mouse kidney using Angiotensinogen Polyclonal Antibody at dilution of 1:200.

Preparation & Storage

Storage	Store at -20°C Valid for 12 months. Avoid freeze / thaw cycles.
Shipping	The product is shipped with ice pack, upon receipt, store it immediately at the temperature recommended.

Background

For Research Use Only

Angiotensinogen is a precursor of angiotensin II (Ang II), is expressed and synthesized largely in the liver and is cleaved by the enzyme renin in response to lowered blood pressure. It has a key role in mediating vascular constriction and regulating salt and fluid homeostasis. The resulting product, angiotensin I, is then cleaved by angiotensin converting enzyme (ACE) to generate the physiologically active enzyme angiotensin II. Mutations in this gene are associated with susceptibility to essential hypertension, and can cause renal tubular dysgenesis, a severe disorder of renal tubular development. Defects in this gene have also been associated with non-familial structural atrial fibrillation, and inflammatory bowel disease.