

CAV1 Polyclonal Antibody

Catalog Number: E-AB-70344

Note: Centrifuge before opening to ensure complete recovery of vial contents.

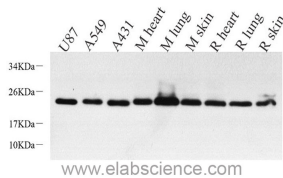
Description

Reactivity	Human, Mouse, Rat
Immunogen	KLH conjugated Synthetic peptide corresponding to Mouse Caveolin-1
Host	Rabbit
Isotype	IgG
Purification	Affinity purification
Conjugation	Unconjugated
Formulation	PBS with 0.02% sodium azide, 1% protective protein and 50% glycerol, pH7.4

Applications Recommended Dilution

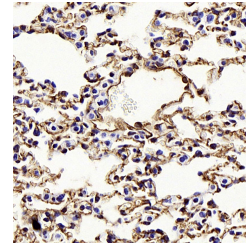
WB	1:500-1:2000
IHC	1:500-1:1000

Data

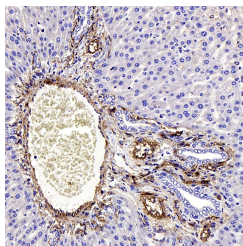


Western Blot analysis of various samples using CAV1 Polyclonal Antibody at dilution of 1:800.

Observed Mw:20kDa
Calculated Mw:20kDa



Immunohistochemistry analysis of paraffin-embedded mouse lung using CAV1 Polyclonal Antibody at dilution of 1:1000.



Immunohistochemistry analysis of paraffin-embedded rat liver using CAV1 Polyclonal Antibody at dilution of 1:1000.

Preparation & Storage

Storage Store at -20°C. Avoid freeze / thaw cycles.

Background

Caveolin-1 (CAV1), a multifunctional protein, is the main constituent molecule of caveolae and represents a scaffolding molecule for several signaling molecules including epidermal growth factor receptor. Several studies have implicated that a reduced expression of CAV1 was found in cancers including head and neck carcinoma. However, other studies

For Research Use Only

A Reliable Research Partner in Life Science and Medicine

Toll-free: 1-888-852-8623

Web: www.elabscience.com

Tel: 1-832-243-6086

Email: techsupport@elabscience.com

Fax: 1-832-243-6017

CAV1 Polyclonal Antibody

Catalog Number: E-AB-70344



recognize CAV1 as a tumor promoter because CAV1 is overexpressed in various kinds of cancers, especially in oral cancer. Recent study also shows that CAV1 is involved in gastric cancer.

For Research Use Only

A Reliable Research Partner in Life Science and Medicine

Toll-free: 1-888-852-8623

Tel: 1-832-243-6086

Fax: 1-832-243-6017

Web: www.elabscience.com

Email: techsupport@elabscience.com