

SSSCA1 Polyclonal Antibody

catalog number: E-AB-52845

Note: Centrifuge before opening to ensure complete recovery of vial contents.

Description

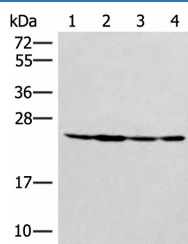
Reactivity	Human;Mouse
Immunogen	Fusion protein of human SSSCA1
Host	Rabbit
Isotype	IgG
Purification	Antigen affinity purification
Conjugation	Unconjugated
Buffer	Phosphate buffered solution, pH 7.4, containing 0.05% stabilizer and 50% glycerol.

Applications

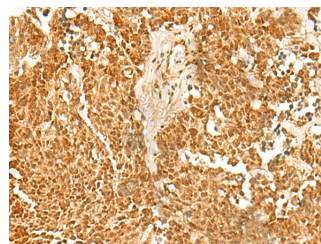
Recommended Dilution

WB	1:500-1:2000
IHC	1:50-1:300

Data



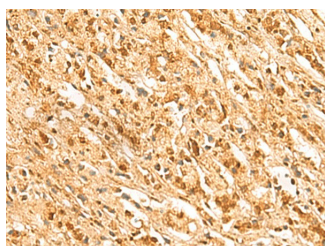
Western blot analysis of HeLa 231 and A549 cell Mouse liver tissue lysates using SSSCA1 Polyclonal Antibody at dilution of 1:400



Immunohistochemistry of paraffin-embedded Human lung cancer tissue using SSSCA1 Polyclonal Antibody at dilution of 1:50(×200)

Observed-MV:Refer to figures

Calculated-MV:21 kDa



Immunohistochemistry of paraffin-embedded Human prostate cancer tissue using SSSCA1 Polyclonal Antibody at dilution of 1:50(×200)

Preparation & Storage

Storage	Store at -20°C Valid for 12 months. Avoid freeze / thaw cycles.
Shipping	The product is shipped with ice pack, upon receipt, store it immediately at the temperature recommended.

Background

This antigen is recognized by a subset of anti-centromere antibodies from patients with scleroderma and/or Sjogren's syndrome. Subcellular localization has not yet been established.

For Research Use Only