

PPIB Monoclonal Antibody

catalog number: E-AB-22170

Note: Centrifuge before opening to ensure complete recovery of vial contents.

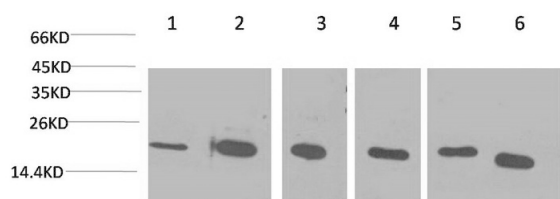
Description

Reactivity	Human;Mouse;Rat
Immunogen	Synthetic Peptide
Host	Mouse
Isotype	IgG
Clone	1B3
Purification	Protein A purification
Buffer	Phosphate buffered solution, pH 7.4, containing 0.05% stabilizer, 0.5% protein protectant and 50% glycerol.

Applications

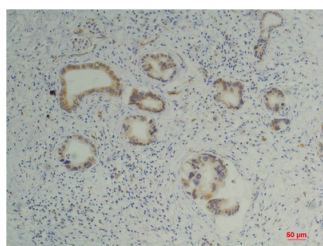
Applications	Recommended Dilution
WB	1:1000-2000
IHC	1:100-200

Data

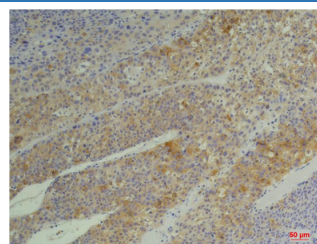


Western Blot analysis of 1) Hela, 2) Jurkat, 3) 293T, 4) Rat liver, 5) 3T3, 6) HepG2 using PPIB Monoclonal Antibody at dilution of 1:2000.

Observed-MV:21 kDa



Immunohistochemistry of paraffin-embedded Human pancreas carcinoma tissue using PPIB Monoclonal Antibody at dilution of 1:200.



Immunohistochemistry of paraffin-embedded Human hepatocarcinoma tissue using PPIB Monoclonal Antibody at dilution of 1:200.

Preparation & Storage

Storage	Store at -20°C Valid for 12 months. Avoid freeze / thaw cycles.
Shipping	The product is shipped with ice pack, upon receipt, store it immediately at the temperature recommended.

Background

For Research Use Only

The protein encoded by this gene is a cyclosporine-binding protein and is mainly located within the endoplasmic reticulum. It is associated with the secretory pathway and released in biological fluids. This protein can bind to cells derived from T- and B-lymphocytes, and may regulate cyclosporine A-mediated immunosuppression. Variants have been identified in this protein that give rise to recessive forms of osteogenesis imperfecta.

For Research Use Only

Toll-free: 1-888-852-8623
Web: www.elabscience.com

Tel: 1-832-243-6086
Email: techsupport@elabscience.com

Fax: 1-832-243-6017

Rev. V1.6