

Recombinant chicken IGF1/IGF- I/IGF-1 protein (His Tag)

Catalog Number: PDEO100025



Note: Centrifuge before opening to ensure complete recovery of vial contents.

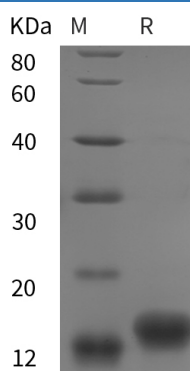
Description

| | |
|---------------------|----------------------------|
| Species | Chicken |
| Mol_Mass | 11.4 kDa |
| Accession | P18254 |
| Bio-activity | Not validated for activity |

Properties

| | |
|-----------------------|--|
| Purity | > 95% as determined by reducing SDS-PAGE. |
| Endotoxin | < 10 EU/mg of the protein as determined by the LAL method |
| Storage | Generally, lyophilized proteins are stable for up to 12 months when stored at -20 to -80 °C. Reconstituted protein solution can be stored at 4-8°C for 2-7 days. Aliquots of reconstituted samples are stable at < -20°C for 3 months. |
| Shipping | This product is provided as lyophilized powder which is shipped with ice packs. |
| Formulation | Lyophilized from a 0.2 µm filtered solution in PBS with 5% Trehalose and 5% Mannitol. |
| Reconstitution | It is recommended that sterile water be added to the vial to prepare a stock solution of 0.5 mg/mL. Concentration is measured by UV-Vis. |

Data



> 95 % as determined by reducing SDS-PAGE.

Background

IGF I, also known as Mechano Growth Factor, somatomedin-C, IGF-I, and IGF1, is a secreted protein that belongs to the insulin family. The insulin family, comprised of insulin, relaxin, insulin-like growth factors I and II (IGF-I and IGF-II), and possibly the beta-subunit of 7S nerve growth factor, represents a group of structurally related polypeptides whose biological functions have diverged. The IGFs, or somatomedins, constitute a class of polypeptides that have a key role in pre-adolescent mammalian growth. IGF-I expression is regulated by GH and mediates postnatal growth, while IGF-II appears to be induced by placental lactogen during prenatal development. IGF1 / IGF-I may be a physiological regulator of [1-14C]-2-deoxy-D-glucose (2DG) transport and glycogen synthesis in osteoblasts. IGF1 / IGF-I stimulates glucose transport in rat bone-derived osteoblastic (PyMS) cells and is effective at much lower concentrations than insulin, not only regarding glycogen and DNA synthesis but also about enhancing glucose uptake. Defects in IGF1 / IGF-I are the cause of insulin-like growth factor I deficiency (IGF1 deficiency) which is an autosomal recessive disorder characterized by growth retardation, sensorineural deafness, and mental retardation.

For Research Use Only

A Reliable Research Partner in Life Science and Medicine
Tel:400-999-2100

Email:techsupport@elabscience.cn

Web:www.elabscience.cn

Rev. V1.2