

Recombinant Rat Angiotensinogen/AGT Protein (His Tag)

Catalog Number: PDMR100022

Note: Centrifuge before opening to ensure complete recovery of vial contents.

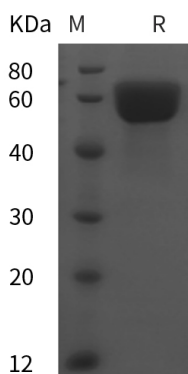
Description

Species	Rat
Source	Mammalian-derived Rat Angiotensinogen;AGT protein Met1-Val477, with an C-terminal His
Calculated MW	52.4 kDa
Observed MW	60 kDa
Accession	P01015
Bio-activity	Not validated for activity

Properties

Purity	> 95% as determined by reducing SDS-PAGE.
Endotoxin	< 1.0 EU/mg of the protein as determined by the LAL method
Storage	Generally, lyophilized proteins are stable for up to 12 months when stored at -20 to -80°C. Reconstituted protein solution can be stored at 4-8°C for 2-7 days. Aliquots of reconstituted samples are stable at < -20°C for 3 months.
Shipping	This product is provided as lyophilized powder which is shipped with ice packs.
Formulation	Lyophilized from a 0.2 µm filtered solution in PBS with 5% Trehalose and 5% Mannitol.
Reconstitution	It is recommended that sterile water be added to the vial to prepare a stock solution of 0.5 mg/mL. Concentration is measured by UV-Vis.

Data



SDS-PAGE analysis of Rat Angiotensinogen/AGT proteins, 2 µg/lane of Recombinant Rat Angiotensinogen/AGT proteins was resolved with SDS-PAGE under reducing conditions, showing bands at 60 kDa.

Background

For Research Use Only

Angiotensinogen, also known as AGT and SerpinA8, is a member of the serpin family. It is an α_2 -globulin that is produced constitutively and released into the circulation mainly by the liver. Angiotensinogen is an essential component of the renin-angiotensin system (RAS) and a potent regulator of blood pressure. Angiotensinogen can be schematically considered to consist of a combination of an angiotensin I (Ang I) function, located at the N-terminal end, and the presence of a serpin (serine protease inhibitor) structure at the opposite end. Angiotensinogen is cleaved into three chains: Angiotensin-1 (Ang I), Angiotensin-2 (Ang II), and Angiotensin-3 (Ang III). Angiotensin-1 is a substrate of ACE (angiotensin converting enzyme) that removes a dipeptide to yield the physiologically active peptide angiotensin-2. Angiotensin-1 and angiotensin-2 can be further processed to generate angiotensin-3, angiotensin-4. Angiotensin 1-7 is cleaved from angiotensin-2 by ACE2. Angiotensin-2 acts directly on vascular smooth muscle as a potent vasoconstrictor, affects cardiac contractility and heart rate through its action on the sympathetic nervous system. Angiotensinogen/AGT and its renin-cleaved product, des(Ang I)AGT, are angiogenesis inhibitors, both in vitro and in vivo at concentrations within the range of those observed in plasma. The Angiotensinogen products, that is angiotensin II and possibly angiotensin II-related products, have been found to act locally in modulating adipose tissue growth in an autocrine/paracrine manner.

For Research Use Only

Toll-free: 1-888-852-8623
Web: www.elabscience.com

Tel: 1-832-243-6086
Email: techsupport@elabscience.com

Fax: 1-832-243-6017