

FITC Anti-Human CD352 Antibody[W19035D]

Catalog Number: AN00321C

Note: Centrifuge before opening to ensure complete recovery of vial contents.

Description

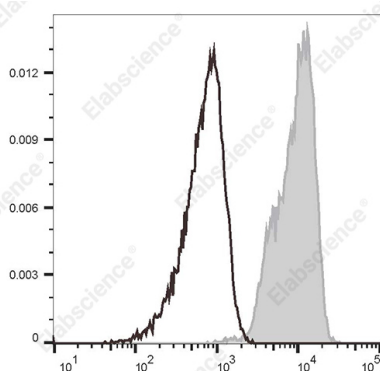
| | |
|--------------------------------|--|
| Reactivity | Human |
| Host | Rat |
| Isotype | Rat IgG2a, κ |
| Clone No. | W19035D |
| Isotype Control | FITC Rat IgG2a, κ Isotype Control[2A3] [Product E-AB-F09832C] |
| Conjugation | FITC |
| Conjugation Information | FITC is designed to be excited by the Blue laser (488 nm) and detected using an optical filter centered near 530 nm (e.g., a 525/40 nm bandpass filter). |
| Storage Buffer | Phosphate buffered solution, pH 7.2, containing 0.09% sodium azide and 1% BSA. |

Applications

Recommended usage

| | |
|------------|--|
| FCM | Each lot of this antibody is quality control tested by flow cytometric analysis. The amount of the reagent is suggested to be used 5 μL of antibody per test (million cells in 100 μL staining volume or per 100 μL of whole blood). Please check your vial before the experiment. Since applications vary, the appropriate dilutions must be determined for individual use. |
|------------|--|

Data



Staining of normal human peripheral blood cells with FITC Anti-Human CD352 Antibody[W19035D] (filled gray histogram) or FITC Rat IgG2a, κ Isotype Control (empty black histogram). Cells in the lymphocytes gate were used for analysis.

Preparation & Storage

| | |
|-----------------|---|
| Storage | Keep as concentrated solution. This product can be stored at 2-8°C for 12 months. Please protected from prolonged exposure to light and do not freeze. |
| Shipping | Ice bag |

Antigen Information

| | |
|------------------------|-------------------------------|
| Alternate Names | SLAMF6;LY108;TCOM;SF2000;NTBA |
| Uniprot ID | Q96DU3 |
| Gene ID | 114836 |

For Research Use Only

Background

NTBA (NK-, T-, and B-cell Antigen) is a 60 kD type I transmembrane glycoprotein. It is a member of Ig superfamily belonging to CD2/CD150 subfamily, also known as SLAMF6 (SLAM family member 6), LY108, TCOM, or SF2000. This antigen is expressed on NK cells, T cells (upregulated upon activation), and B cells. NTBA is its own ligand. The homophilic interaction of NTBA is involved in the induction of NK cytotoxicity, CD28 independent T cell costimulation, triggering Th1 cytokines production, and regulation of B cell tolerance. It may play a role in the regulation of autoimmune diseases.