

CRELD2 Polyclonal Antibody

Catalog Number: E-AB-11103



Note: Centrifuge before opening to ensure complete recovery of vial contents.

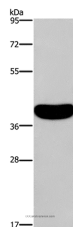
Description

Reactivity	Human
Immunogen	Recombinant protein of human CRELD2
Host	Rabbit
Isotype	IgG
Purification	Affinity purification
Conjugation	Unconjugated
Formulation	PBS with 0.05% sodium azide and 50% glycerol, PH7.4

Applications Recommended Dilution

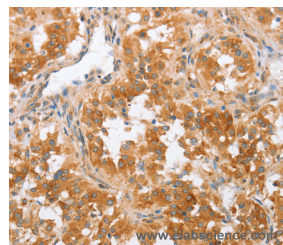
WB	1:500-1:2000
IHC	1:50-1:200

Data

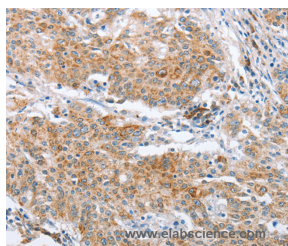


Western Blot analysis of Human normal colon tissue using CRELD2 Polyclonal Antibody at dilution of 1:550

Calculated Mw:38kDa



Immunohistochemistry of paraffin-embedded Human thyroid cancer using CRELD2 Polyclonal Antibody at dilution of 1:50



Immunohistochemistry of paraffin-embedded Human gastric cancer using CRELD2 Polyclonal Antibody at dilution of 1:50

Preparation & Storage

Storage Store at -20°C. Avoid freeze / thaw cycles.

Background

The epidermal growth factor (EGF) repeat-containing proteins constitute an expanding family of proteins that are involved in several cellular activities, such as blood coagulation, fibrinolysis, cell adhesion and neural and vertebrate development. CRELD2 (cysteine-rich with EGF-like domains 2) is a 353 amino acid protein that is ubiquitously

For Research Use Only

A Reliable Research Partner in Life Science and Medicine

Toll-free: 1-888-852-8623

Web: www.elabscience.com

Tel: 1-832-243-6086

Email: techsupport@elabscience.com

Fax: 1-832-243-6017

CRELD2 Polyclonal Antibody

Catalog Number: E-AB-11103



expressed and contains two FU domains and two EGF-like domains. Localized to the endoplasmic reticulum and secreted into the cell, CRELD2 interacts with AChR α 4, possibly regulating its transport. Human CRELD2 shares 69% amino acid identity with its mouse counterpart, suggesting a conserved role between species. Multiple isoforms of CRELD2 exist due to alternative splicing events. The gene encoding CRELD2 maps to human chromosome 22, which houses over 500 genes and is the second smallest human chromosome. Mutations in several of the genes that map to chromosome 22 are involved in the development of Phelan-McDermid syndrome, Neurofibromatosis type 2, autism and schizophrenia.

For Research Use Only

A Reliable Research Partner in Life Science and Medicine

Toll-free: 1-888-852-8623

Tel: 1-832-243-6086

Fax: 1-832-243-6017

Web: www.elabscience.com

Email: techsupport@elabscience.com