

## Serum Albumin Monoclonal Antibody(Detector)

catalog number: AN001630P

**Note:** Centrifuge before opening to ensure complete recovery of vial contents.

### Description

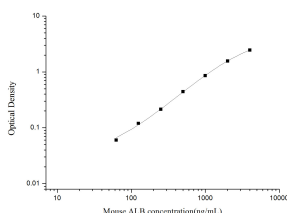
<b>Reactivity</b>	Mouse
<b>Immunogen</b>	Mouse ALB Native Protein
<b>Host</b>	Rat
<b>Isotype</b>	Rat IgG1
<b>Clone</b>	2E5
<b>Purification</b>	Protein A/G Purification
<b>Conjugation</b>	Unconjugated
<b>Buffer</b>	Phosphate buffered solution, pH 7.2, containing 0.05% proclin 300.

### Applications

### Recommended Dilution

<b>ELISA Detector</b>	0.1-0.4 µg/mL
-----------------------	---------------

### Data



Sandwich ELISA-Mouse ALB Native Protein standard curve. Background subtracted standard curve using Serum Albumin antibody(AN001620P)(Capture), Serum Albumin antibody(AN001630P)(Detector) in sandwich ELISA. The reference range value for Native Protein is 62.5-4000 ng/mL.

### Preparation & Storage

<b>Storage</b>	Store at 4°C valid for 12 months or -20°C valid for long term storage, avoid freeze / thaw cycles.
<b>Shipping</b>	The product is shipped with ice pack, upon receipt, store it immediately at the temperature recommended.

### Background

Albumin is the most abundant protein in blood plasma. Alterations of level of serum albumin are linked to variety of diseases. Albumin is expressed exclusively by well-differentiated hepatocytes, thus anti-albumin has been used to mark hepatocytes. In addition, glycated serum albumin is also a potential diabetes biomarker. The N-terminal 24aa of albumin will be cleaved to generate the mature form of serum albumin with MW 66 kDa.

### For Research Use Only