

Recombinant Human SPESP1 Protein (His Tag)

Catalog Number:PKSH033075



Note: Centrifuge before opening to ensure complete recovery of vial contents.

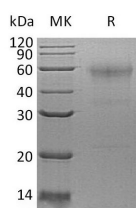
Description

Synonyms	Sperm Equatorial Segment Protein 1;ESP;Equatorial Segment Protein;SP-ESP;Glycosylated 38 kDa Sperm Protein C-7/8;SPESP1
Species	Human
Expression Host	HEK293 Cells
Sequence	Tyr20-Tyr350
Accession	Q6UW49
Calculated Molecular Weight	37.9 kDa
Observed molecular weight	58 kDa
Tag	C-His

Properties

Purity	> 90 % as determined by reducing SDS-PAGE.
Endotoxin	< 1.0 EU per µg of the protein as determined by the LAL method.
Storage	Generally, lyophilized proteins are stable for up to 12 months when stored at -20 to -80°C. Reconstituted protein solution can be stored at 4-8°C for 2-7 days. Aliquots of reconstituted samples are stable at < -20°C for 3 months.
Shipping	This product is provided as lyophilized powder which is shipped with ice packs.
Formulation	Lyophilized from a 0.2 µm filtered solution of 20mM PB,150mM NaCl,pH7.4. Normally 5 % - 8 % trehalose, mannitol and 0.01% Tween80 are added as protectants before lyophilization. Please refer to the specific buffer information in the printed manual
Reconstitution	Please refer to the printed manual for detailed information.

Data



> 90 % as determined by reducing SDS-PAGE.

Background

Sperm Equatorial Segment Protein 1 (SPESP1) is a member of the SPESP1 family. SPESP1 is highly expressed in the testis, where it is localized to the acrosome of postmeiotic stages of spermiogenesis; it is expressed at lower levels in the placenta and fetal lung. SPESP1 is involved in the multicellular organisimal development. Disruption of SPESP1 leads to abnormal distribution of sperm proteins resulting in a detached membrane from the equatorial segment and less fertile sperm. SPESP1 may interact with IZUMO1 and MN9 antigen and it contains an N-glycosylation site as well as several cAMP-dependent kinase, protein kinase C, and casein kinase II consensus phosphorylation sites.

For Research Use Only

A Reliable Research Partner in Life Science and Medicine

Toll-free: 1-888-852-8623

Web: www.elabscience.com

Tel: 1-832-243-6086

Email: techsupport@elabscience.com

Fax: 1-832-243-6017