

Elab Fluor® 700 Anti-Rat CD4(domain 1) Antibody[OX-38]

Catalog Number: E-AB-F1105M1

Note: Centrifuge before opening to ensure complete recovery of vial contents.

Description

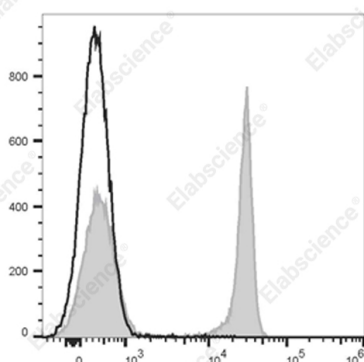
| | |
|--------------------------------|--|
| Reactivity | Rat |
| Host | Mouse |
| Isotype | Mouse IgG2a, κ |
| Clone No. | OX-38 |
| Isotype Control | Elab Fluor® 700 Mouse IgG2a, κ Isotype Control[C1.18.4] [Product E-AB-F09802M1] |
| Conjugation | Elab Fluor® 700 |
| Conjugation Information | Elab Fluor® 700 is designed to be excited by the Red laser (627-640 nm) and detected using an optical filter centered near 719 nm (e.g., a 725/40 nm bandpass filter). |
| Storage Buffer | Phosphate buffered solution, pH 7.2, containing 0.09% stabilizer and 1% protein protectant. |

Applications

Recommended usage

| | |
|------------|---|
| FCM | Each lot of this antibody is quality control tested by flow cytometric analysis. The amount of the reagent is suggested to be used 5 μL of antibody per test (million cells in 100 μL staining volume or per 100 μL of whole blood). Please check your vial before the experiment. Since applications vary, the appropriate dilutions must be determined for individual use. |
|------------|---|

Data



Staining of Rat splenocytes with Elab Fluor® 700 Anti-Rat CD4(domain 1) Antibody[OX-38] (filled gray histogram) or

Elab Fluor® 700 Mouse IgG2a, κ Isotype Control (empty black histogram). Total viable cells were used for analysis.

Preparation & Storage

| | |
|-----------------|---|
| Storage | Keep as concentrated solution. This product can be stored at 2-8°C for 12 months. Please protected from prolonged exposure to light and do not freeze. |
| Shipping | Ice bag |

Antigen Information

| | |
|------------------------|--|
| Alternate Names | CD4;T-cell surface antigen T4/Leu-3;T-cell surface glycoprotein CD4;domain 1 |
| Uniprot ID | P05540 |
| Gene ID | 24932 |

For Research Use Only

Background

CD4, also known as T4, is a 55kD glycoprotein member of the immunoglobulin superfamily and is expressed on majority of thymocytes, macrophages, and a peripheral T cell subset (T helper cells). CD4 is a T cell co-receptor that interacts with the MHC class II molecule and is involved in T cell activation.