

Recombinant Rat CLEC4B2/mDCAR1 Protein (His Tag)

Catalog Number: PKSR030278

Note: Centrifuge before opening to ensure complete recovery of vial contents.

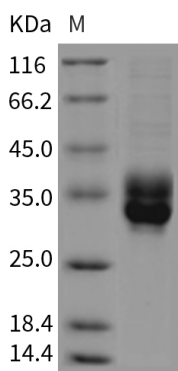
Description

Species	Rat
Source	HEK293 Cells-derived Rat CLEC4B2/mDCAR1 protein Met44-Leu208, with an N-terminal His
Calculated MW	21.8 kDa
Observed MW	31-36 kDa
Accession	Q67DU9
Bio-activity	Not validated for activity

Properties

Purity	> 85 % as determined by reducing SDS-PAGE.
Endotoxin	< 1.0 EU per µg of the protein as determined by the LAL method.
Storage	Generally, lyophilized proteins are stable for up to 12 months when stored at -20 to -80°C. Reconstituted protein solution can be stored at 4-8°C for 2-7 days. Aliquots of reconstituted samples are stable at < -20°C for 3 months.
Shipping	This product is provided as lyophilized powder which is shipped with ice packs.
Formulation	Lyophilized from sterile PBS, pH 7.4 Normally 5% - 8% trehalose, mannitol and 0.01% Tween 80 are added as protectants before lyophilization. Please refer to the specific buffer information in the printed manual.
Reconstitution	Please refer to the printed manual for detailed information.

Data



> 85 % as determined by reducing SDS-PAGE.

Background

Clec4b2, also known as mDCAR1, is a member of the DCIR/DCAR family. Expression of Clec4b2 was strongly tissue dependent. Clec4b2 expression on DCs was restricted to the CD8(+) DC subset in spleen and thymus and on subpopulations of CD11b(+) myeloid cells in bone marrow and spleen, whereas the molecule was not detectable on both cell types in lymph nodes and peripheral blood. Clec4b2 is a functional receptor on cells of the immune system and provides further insights into the regulation of immune responses by CLRs.

For Research Use Only

Toll-free: 1-888-852-8623
Web: www.elabscience.com

Tel: 1-832-243-6086
Email: techsupport@elabscience.com

Fax: 1-832-243-6017