

CD23/FcεRII Polyclonal Antibody(Capture/Detector)

catalog number: AN002420P

Note: Centrifuge before opening to ensure complete recovery of vial contents.

Description

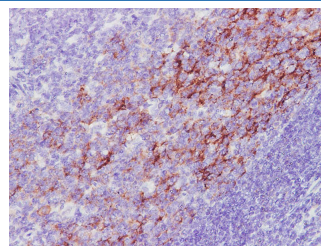
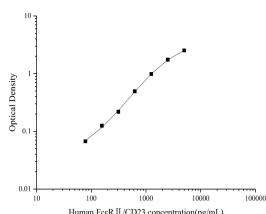
Reactivity	Human
Immunogen	Recombinant Human CD23/FcεRII protein expressed by Mammalian
Host	Rabbit
Isotype	Rabbit IgG
Purification	Antigen Affinity Purification
Conjugation	Unconjugated
Buffer	Phosphate buffered solution, pH 7.2, containing 0.05% proclin 300.

Applications

Recommended Dilution

ELISA Capture	2-8 µg/mL
ELISA Detector	0.1-0.4 µg/mL
IHC	1:1000-1:2000

Data



Sandwich ELISA-Recombinant Human CD23/FcεRII protein standard curve. Background subtracted standard curve using CD23/FcεRII antibody(AN002420P)(Capture), CD23/FcεRII antibody(AN002420P)(Detector) in sandwich ELISA. The reference range value for Recombinant Human CD23/FcεRII protein is 78.13-5000 pg/mL.

Immunohistochemistry of paraffin-embedded Human tonsil using CD23/FcεRII Polyclonal Antibody at dilution of 1:3000.

Preparation & Storage

Storage	Store at 4°C valid for 12 months or -20°C valid for long term storage, avoid freeze / thaw cycles.
Shipping	The product is shipped with ice pack, upon receipt, store it immediately at the temperature recommended.

Background

CD23, also known as low affinity immunoglobulin epsilon Fc receptor, is a transmembrane glycoprotein present on a subpopulation of B lymphocytes in germinal centres, EBV-transformed B-lymphoblastoid cell lines, follicular dendritic cells, and a subpopulation of peripheral blood cells. CD23 has essential roles in the regulation of IgE production and in the differentiation of B-cells.

For Research Use Only