

BMP1 Polyclonal Antibody

catalog number: E-AB-53602

Note: Centrifuge before opening to ensure complete recovery of vial contents.

Description

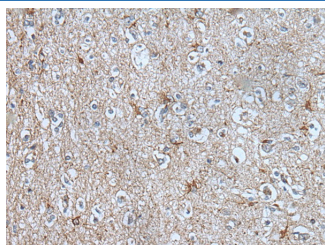
| | |
|--------------|--|
| Reactivity | Human;Mouse |
| Immunogen | Synthetic peptide of human BMP1 |
| Host | Rabbit |
| Isotype | IgG |
| Purification | Antigen affinity purification |
| Conjugation | Unconjugated |
| Buffer | Phosphate buffered solution, pH 7.4, containing 0.05% stabilizer and 50% glycerol. |

Applications

Recommended Dilution

| | |
|-----|------------|
| IHC | 1:50-1:300 |
|-----|------------|

Data



Immunohistochemistry of paraffin-embedded Human brain tissue using BMP1 Polyclonal Antibody at dilution of 1:105(×200)

Preparation & Storage

| | |
|----------|--|
| Storage | Store at -20°C Valid for 12 months. Avoid freeze / thaw cycles. |
| Shipping | The product is shipped with ice pack, upon receipt, store it immediately at the temperature recommended. |

Background

BMP1 (Bone Morphogenetic Protein 1) is a Protein Coding gene. Diseases associated with BMP1 include Osteogenesis Imperfecta, Type Xiii and Bmp1-Related Osteogenesis Imperfecta. Among its related pathways are GPCR Pathway and PEDF Induced Signaling. GO annotations related to this gene include calcium ion binding and growth factor activity. An important paralog of this gene is TLL2. This gene encodes a protein that is capable of inducing formation of cartilage in vivo. Although other bone morphogenetic proteins are members of the TGF-beta superfamily, this gene encodes a protein that is not closely related to other known growth factors. This gene is expressed as alternatively spliced variants that share an N-terminal protease domain but differ in their C-terminal region.

For Research Use Only