

## Recombinant Human CCL23/MIPF-1 Protein(Sumo Tag)

**Catalog Number:** PDEH100607

**Note:** Centrifuge before opening to ensure complete recovery of vial contents.

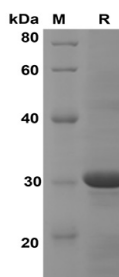
### Description

<b>Species</b>	Human
<b>Source</b>	E.coli-derived Human CCL23/MIPF-1 protein Arg22-Asn120, with an N-terminal Sumo
<b>Calculated MW</b>	23.8 kDa
<b>Observed MW</b>	30 kDa
<b>Accession</b>	P55773
<b>Bio-activity</b>	Not validated for activity

### Properties

<b>Purity</b>	> 90% as determined by reducing SDS-PAGE.
<b>Endotoxin</b>	< 10 EU/mg of the protein as determined by the LAL method
<b>Storage</b>	Generally, lyophilized proteins are stable for up to 12 months when stored at -20 to -80 °C. Reconstituted protein solution can be stored at 4-8°C for 2-7 days. Aliquots of reconstituted samples are stable at < -20°C for 3 months.
<b>Shipping</b>	This product is provided as lyophilized powder which is shipped with ice packs.
<b>Formulation</b>	Lyophilized from a 0.2 µm filtered solution in PBS with 5% Trehalose and 5% Mannitol.
<b>Reconstitution</b>	It is recommended that sterile water be added to the vial to prepare a stock solution of 0.5 mg/mL. Concentration is measured by UV-Vis.

### Data



SDS-PAGE analysis of Human CCL23/MIPF-1 proteins, 2 µg/lane of Recombinant Human CCL23/MIPF-1 proteins was resolved with SDS-PAGE under reducing conditions, showing bands at 30 KD

### Background

CCL23/MIPF-1, also known as MIP 3, is a small cytokine which belongs to the CC chemokine family. Cytokines are a family of secreted proteins involved in immunoregulatory and inflammatory processes. CCL23/MIPF-1 is predominantly expressed in lung and liver tissue, but also can be detected in bone marrow and placenta. It displays chemotactic activity on resting T lymphocytes and monocytes, lower activity on neutrophils and no activity on activated T lymphocytes. CCL23/MIPF-1 is also a strong suppressor of colony formation by a multipotential hematopoietic progenitor cell line.

### For Research Use Only