

# Recombinant Human S100P/S100E Protein

Catalog Number: PKSH030800



**Note:** Centrifuge before opening to ensure complete recovery of vial contents.

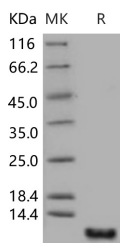
## Description

<b>Synonyms</b>	Protein S100-P; Protein S100-E; S100 Calcium-Binding Protein P; S100P; S100E; MIG9
<b>Species</b>	Human
<b>Expression Host</b>	E.coli
<b>Sequence</b>	Met 1-Lys 95
<b>Accession</b>	P25815
<b>Calculated Molecular Weight</b>	10.4 kDa
<b>Tag</b>	None

## Properties

<b>Purity</b>	> 97 % as determined by reducing SDS-PAGE.
<b>Endotoxin</b>	Please contact us for more information.
<b>Storage</b>	Generally, lyophilized proteins are stable for up to 12 months when stored at -20 to -80°C. Reconstituted protein solution can be stored at 4-8°C for 2-7 days. Aliquots of reconstituted samples are stable at < -20°C for 3 months.
<b>Shipping</b>	This product is provided as lyophilized powder which is shipped with ice packs.
<b>Formulation</b>	Lyophilized from sterile PBS, pH 7.5 Normally 5 % - 8 % trehalose, mannitol and 0.01% Tween80 are added as protectants before lyophilization. Please refer to the specific buffer information in the printed manual.
<b>Reconstitution</b>	Please refer to the printed manual for detailed information.

## Data



> 97 % as determined by reducing SDS-PAGE.

## Background

Protein S100-P; also known as Protein S100-E; S100 calcium-binding protein P; S100P and S100E; is a nucleus and cytoplasm protein which belongs to the S-100 family. S100P / S100E contains two EF-hand domains. S100P protein regulates calcium signal transduction and mediates cytoskeletal interaction; protein phosphorylation and transcriptional control. S100P / S100E overexpression can upregulate androgen receptor expression and thereby promote prostate cancer progression by increasing cell growth. S100P / S100E may directly confer resistance to chemotherapy. S100P / S100E induction may be considered an important step in the initial stage of lung adenocarcinomas; whereas its downregulation in advanced stages seems to be important for tumour progression in which DNA methylation and/or feedback transcription processes play a critical role. S100P / S100E plays a major role in the aggressiveness of pancreatic cancer that is likely mediated by its ability to activate RAGE. Interference with S100P / S100E may provide a novel approach for treatment of

## For Research Use Only

A Reliable Research Partner in Life Science and Medicine

Toll-free: 1-888-852-8623

Web: [www.elabscience.com](http://www.elabscience.com)

Tel: 1-832-243-6086

Email: [techsupport@elabscience.com](mailto:techsupport@elabscience.com)

Fax: 1-832-243-6017

# Recombinant Human S100P/S100E Protein

Catalog Number:PKSH030800



pancreatic cancer. S100P / S100E could be considered a potential drug target or a chemosensitization target; and could also serve as a biomarker for aggressive; hormone-refractory and metastatic prostate cancer.

## For Research Use Only

A Reliable Research Partner in Life Science and Medicine

Toll-free: 1-888-852-8623

Web: [www.elabscience.com](http://www.elabscience.com)

Tel: 1-832-243-6086

Email: [techsupport@elabscience.com](mailto:techsupport@elabscience.com)

Fax: 1-832-243-6017