

## Recombinant Rat IFN $\gamma$ Protein(His Tag)

**Catalog Number:** PDER100167

**Note:** Centrifuge before opening to ensure complete recovery of vial contents.

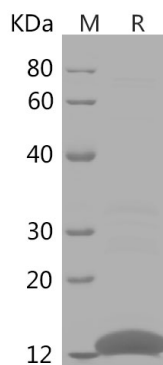
### Description

<b>Species</b>	Rat
<b>Source</b>	E.coli-derived Rat IFN $\gamma$ protein Gln23-Cys156, with an N-terminal His
<b>Calculated MW</b>	15.5 kDa
<b>Observed MW</b>	16 kDa
<b>Accession</b>	P01581
<b>Bio-activity</b>	Not validated for activity

### Properties

<b>Purity</b>	> 80% as determined by reducing SDS-PAGE.
<b>Endotoxin</b>	< 10 EU/mg of the protein as determined by the LAL method
<b>Storage</b>	Generally, lyophilized proteins are stable for up to 12 months when stored at -20 to -80°C. Reconstituted protein solution can be stored at 4-8°C for 2-7 days. Aliquots of reconstituted samples are stable at < -20°C for 3 months.
<b>Shipping</b>	This product is provided as lyophilized powder which is shipped with ice packs.
<b>Formulation</b>	Lyophilized from a 0.2 $\mu$ m filtered solution in PBS with 5% Trehalose and 5% Mannitol.
<b>Reconstitution</b>	It is recommended that sterile water be added to the vial to prepare a stock solution of 0.5 mg/mL. Concentration is measured by UV-Vis.

### Data



SDS-PAGE analysis of Rat IFN $\gamma$  proteins, 2  $\mu$ g/lane of Recombinant Rat IFN $\gamma$  proteins was resolved with SDS-PAGE under reducing conditions, showing bands at 16 kDa.

### Background

#### For Research Use Only

Toll-free: 1-888-852-8623  
Web: [www.elabscience.com](http://www.elabscience.com)

Tel: 1-832-243-6086  
Email: [techsupport@elabscience.com](mailto:techsupport@elabscience.com)

Fax: 1-832-243-6017

Type II interferon produced by immune cells such as T-cells and NK cells that plays crucial roles in antimicrobial, antiviral, and antitumor responses by activating effector immune cells and enhancing antigen presentation. Primarily signals through the JAK-STAT pathway after interaction with its receptor IFNGR1 to affect gene regulation. Upon IFNG binding, IFNGR1 intracellular domain opens out to allow association of downstream signaling components JAK2, JAK1 and STAT1, leading to STAT1 activation, nuclear translocation and transcription of IFNG-regulated genes. Many of the induced genes are transcription factors such as IRF1 that are able to further drive regulation of a next wave of transcription. Plays a role in class I antigen presentation pathway by inducing a replacement of catalytic proteasome subunits with immunoproteasome subunits. In turn, increases the quantity, quality, and repertoire of peptides for class I MHC loading. Increases the efficiency of peptide generation also by inducing the expression of activator PA28 that associates with the proteasome and alters its proteolytic cleavage preference. Up-regulates as well MHC II complexes on the cell surface by promoting expression of several key molecules such as cathepsins B/CTSB, H/CTSH, and L/CTSL. Participates in the regulation of hematopoietic stem cells during development and under homeostatic conditions by affecting their development, quiescence, and differentiation.