

## Recombinant ENO1 Monoclonal Antibody

catalog number: **E-AB-81454**

**Note:** Centrifuge before opening to ensure complete recovery of vial contents.

### Description

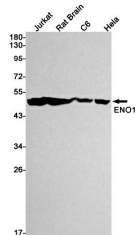
<b>Reactivity</b>	Human;Mouse;Rat
<b>Immunogen</b>	A synthetic peptide of human ENO1
<b>Host</b>	Rabbit
<b>Isotype</b>	IgG
<b>Clone</b>	R01-4C8
<b>Purification</b>	Affinity Purified
<b>Buffer</b>	50mM Tris-Glycine(pH 7.4), 0.15M NaCl, 40% Glycerol, 0.05% stabilizer and 0.05% protective protein.

### Applications

### Recommended Dilution

<b>WB</b>	1:500-1:1000
<b>IHC</b>	1:100-1:200
<b>IF</b>	1:50-1:100

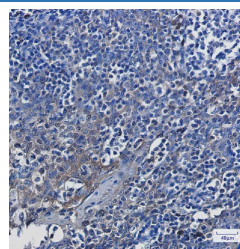
### Data



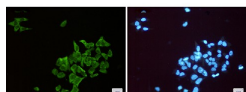
Western blot detection of ENO1 in Jurkat,Rat Brain,C6,Hela cell lysates using ENO1 Rabbit mAb(1:1000 diluted).Predicted band size:47kDa.Observed band size:47kDa.

**Observed-MV:47 kDa**

**Calculated-MV:47 kDa**



Immunohistochemistry of ENO1 in paraffin-embedded Human tonsil using ENO1 Rabbit mAb at dilution 1:100



Immunofluorescence of ENO1(green) in Hela cells using ENO1 Rabbit mAb at dilution 1:50, and DAPI(blue)

### Preparation & Storage

<b>Storage</b>	Store at -20°C Valid for 12 months. A void freeze / thaw cycles.
<b>Shipping</b>	The product is shipped with ice pack,upon receipt,store it immediately at the temperature recommended.

### Background

### For Research Use Only

Enolase is an important glycolytic enzyme involved in the interconversion of 2-phosphoglycerate to phosphoenolpyruvate. Enolase were down-regulated in oxLDL-treated cells or in VLDL-treated cells. And it identified which are associated with glucose metabolism were down-regulated in the process of foam cells formation.

## For Research Use Only

Toll-free: 1-888-852-8623  
Web: [www.elabscience.com](http://www.elabscience.com)

Tel: 1-832-243-6086  
Email: [techsupport@elabscience.com](mailto:techsupport@elabscience.com)

Fax: 1-832-243-6017

Rev. V1.6