

Lutropin subunit beta/LHB Polyclonal Antibody

catalog number: **E-AB-40638**

Note: Centrifuge before opening to ensure complete recovery of vial contents.

Description

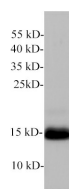
Reactivity	Mouse;Rat
Immunogen	Recombinant Mouse LHB protein expressed by E.coli.
Host	Rabbit
Isotype	IgG
Purification	Antigen Affinity Purification
Buffer	PBS with 0.05% Proclin300, 1% protective protein and 50% glycerol, pH7.4

Applications

Recommended Dilution

WB	1:500-1:1000
-----------	--------------

Data



Western blot of Mouse pancreas with anti-Lutropin subunit beta polyclonal antibody at 1:1000 dilution.

Observed-MW:15 kDa

Calculated-MW:15 kDa



Western blot of Rat pituitary with Lutropin subunit beta polyclonal antibody at 1:1000 dilution.

Observed-MW:15 kDa

Calculated-MW:15 kDa

Preparation & Storage

Storage	Store at -20°C Valid for 12 months. Avoid freeze / thaw cycles.
Shipping	The product is shipped with ice pack,upon receipt,store it immediately at the temperature recommended.

Background

Luteinizing Hormone (LH) is a 42 kDa heterodimer belonging to the glycoprotein hormone family. It is composed of noncovalently linked glycosylated alpha and beta chains. The alpha subunit (CG alpha) is also a component of Follicle-Stimulating Hormone (FSH),Thyroid-Stimulating Hormone,and Chorionic Gonadotropin. The unique beta subunit confers the protein's specific biological action and is responsible for the interaction with its receptor.

For Research Use Only