

# Recombinant Cynomolgus Sialic acid-binding Ig-like lectin 15/Siglec-15/CD33L3 (C-Fc)



Catalog Number:PKSQ050112

**Note:** Centrifuge before opening to ensure complete recovery of vial contents.

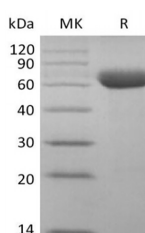
## Description

|                                    |  |
|------------------------------------|--|
| <b>Synonyms</b>                    | Sialic acid-binding Ig-like lectin 15;Siglec-15;CD33 antigen-like 3;CD33L3   |
| <b>Species</b>                     | Cynomolgus macaques  |
| <b>Expression Host</b>             | HEK293 Cells   |
| <b>Sequence</b>                    | Phe20-Thr263   |
| <b>Accession</b>                   | A0A2K5UY47   |
| <b>Calculated Molecular Weight</b> | 53.1 kDa   |
| <b>Observed molecular weight</b>   | 55-70 kDa  |
| <b>Tag</b>                         | C-Fc   |
| <b>Bioactivity</b>                 | Loaded Anti-Human Siglec15 mAb-mFc on AMQ Biosensor, can bind Cynomolgus Siglec-15-Fc with an affinity constant of 0.16 nM as determined in BLI assay. |

## Properties

|                       |   |
|-----------------------|---|
| <b>Purity</b>         | > 95 % as determined by reducing SDS-PAGE.  |
| <b>Endotoxin</b>      | < 1.0 EU per µg of the protein as determined by the LAL method.   |
| <b>Storage</b>        | Generally, lyophilized proteins are stable for up to 12 months when stored at -20 to -80°C. Reconstituted protein solution can be stored at 4-8°C for 2-7 days. Aliquots of reconstituted samples are stable at < -20°C for 3 months.                         |
| <b>Shipping</b>       | This product is provided as lyophilized powder which is shipped with ice packs.   |
| <b>Formulation</b>    | Lyophilized from a 0.2 µm filtered solution of 50mM Tris-HCl, 100mM Glycine, 150mM NaCl, pH 7.5.<br>Normally 5 % - 8 % trehalose, mannitol and 0.01% Tween80 are added as protectants before lyophilization.<br>Please refer to the specific buffer informati |
| <b>Reconstitution</b> | Please refer to the printed manual for detailed information.  |

## Data



> 95 % as determined by reducing SDS-PAGE.

## Background

Siglec-15 is a transmembrane glycoprotein in the Siglec family. Siglecs are type I transmembrane proteins where the NH<sub>3</sub><sup>+</sup>-terminus is in the extracellular space and the COO<sup>-</sup>-terminus is cytosolic. Each Siglec contains an N-terminal V-type immunoglobulin domain (Ig domain) which acts as the binding receptor for sialic acid. These lectins are placed into the group of I-type lectins because the lectin domain is an immunoglobulin fold. All Siglecs are extended from the cell surface by C2-type Ig domains which have no binding activity. Siglecs differ in the number of these C2-type domains.

## For Research Use Only

A Reliable Research Partner in Life Science and Medicine

Toll-free: 1-888-852-8623

Web: [www.elabscience.com](http://www.elabscience.com)

Tel: 1-832-243-6086

Email: [techsupport@elabscience.com](mailto:techsupport@elabscience.com)

Fax: 1-832-243-6017

# Recombinant Cynomolgus Sialic acid-binding Ig-like lectin 15/Siglec-15/CD33L3 (C-Fc)



Catalog Number:PKSQ050112

---

Siglec-15 function is important for osteoclast formation and TRANCE/RANK Ligand signaling in osteoclasts.

---

## For Research Use Only

A Reliable Research Partner in Life Science and Medicine

Toll-free: 1-888-852-8623

Tel: 1-832-243-6086

Fax: 1-832-243-6017

Web: [www.elabscience.com](http://www.elabscience.com)

Email: [techsupport@elabscience.com](mailto:techsupport@elabscience.com)