

Recombinant Human Copine-1/CPNE1 Protein (His Tag)



Catalog Number: PKSH032279

Note: Centrifuge before opening to ensure complete recovery of vial contents.

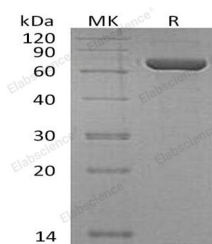
Description

Synonyms	Copine-1; Copine I; CPN1; CPNE1
Species	Human
Expression Host	E.coli
Sequence	Met 1-Ala537
Accession	Q99829
Calculated Molecular Weight	62.3 kDa
Observed molecular weight	58-66 kDa
Tag	N-His & C-His

Properties

Purity	> 95 % as determined by reducing SDS-PAGE.
Endotoxin	< 1.0 EU per µg of the protein as determined by the LAL method.
Storage	Generally, lyophilized proteins are stable for up to 12 months when stored at -20 to -80°C. Reconstituted protein solution can be stored at 4-8°C for 2-7 days. Aliquots of reconstituted samples are stable at < -20°C for 3 months.
Shipping	This product is provided as lyophilized powder which is shipped with ice packs.
Formulation	Lyophilized from a 0.2 µm filtered solution of 20mM Citrate, 50mM NaCl, 6% Trehalose, 3% Glycine, 5mM Methionine, 0.05% Tween 80, pH 5.0. Normally 5 % - 8 % trehalose, mannitol and 0.01% Tween80 are added as protectants before lyophilization. Plea
Reconstitution	Please refer to the printed manual for detailed information.

Data



> 95 % as determined by reducing SDS-PAGE.

Background

Copine-1 (CPNE1) encodes a calcium-dependent protein which belongs to the copine family. CPNE1 contains two N-terminal type II C2 domains and an integrin A domain-like sequence in the C-terminus. However, CPNE1 does not contain a predicted signal sequence or transmembrane domains. CPNE1 may regulate molecular events at the interface of the cell membrane and cytoplasm. CPNE1 has a broad tissue distribution and it may function in membrane trafficking.

For Research Use Only

A Reliable Research Partner in Life Science and Medicine

Toll-free: 1-888-852-8623

Web: www.elabscience.com

Tel: 1-832-243-6086

Email: techsupport@elabscience.com

Fax: 1-832-243-6017