

Recombinant Human TREML2/TLT2 Protein (Fc Tag)

Catalog Number: PKSH033146

Note: Centrifuge before opening to ensure complete recovery of vial contents.

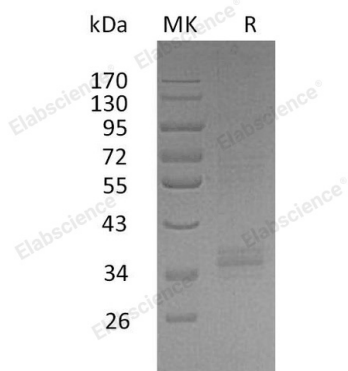
Description

Species	Human
Source	HEK293 Cells-derived Human TREML2/TLT2 protein Gly19-Ser268, with an C-terminal Fc
Calculated MW	54.2 kDa
Observed MW	80-110 kDa
Accession	AAI25079.1
Bio-activity	Not validated for activity

Properties

Purity	> 90 % as determined by reducing SDS-PAGE.
Endotoxin	< 1.0 EU per µg of the protein as determined by the LAL method.
Storage	Generally, lyophilized proteins are stable for up to 12 months when stored at -20 to -80°C. Reconstituted protein solution can be stored at 4-8°C for 2-7 days. Aliquots of reconstituted samples are stable at < -20°C for 3 months.
Shipping	This product is provided as lyophilized powder which is shipped with ice packs.
Formulation	Lyophilized from a 0.2 µm filtered solution of PBS, pH 7.4. Normally 5% - 8% trehalose, mannitol and 0.01% Tween 80 are added as protectants before lyophilization. Please refer to the specific buffer information in the printed manual.
Reconstitution	Please refer to the printed manual for detailed information.

Data



> 90 % as determined by reducing SDS-PAGE.

Background

Trem-like transcript 2 protein (TLT2), also known as Triggering receptor expressed on myeloid cells-like protein 2, TLT2 and C6orf76, is single-pass type I membrane protein. TREML2 contains one Ig-like V-type domain, which can be induced in CD4 T-cell by concanavalin-A. As a cell surface receptor, TREML2 may play a role in the innate and adaptive immune response. TREML2 also acts as a counter-receptor for CD276 and interaction with CD276 on T-cells enhances T-cell activation. It has shown that TREML2 may be involved in the innate immune response based on its expression profile and the fact that it is up-regulated in response to inflammation.

For Research Use Only

Toll-free: 1-888-852-8623
Web: www.elabscience.com

Tel: 1-832-243-6086
Email: techsupport@elabscience.com

Fax: 1-832-243-6017