

IGFBP3 Polyclonal Antibody

catalog number: E-AB-91410

Note: Centrifuge before opening to ensure complete recovery of vial contents.

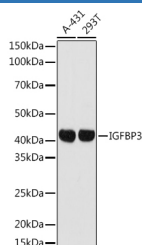
Description

Reactivity	Human;Mouse;Rat
Immunogen	A synthetic peptide of human IGFBP3
Host	Rabbit
Isotype	IgG
Purification	Affinity purification
Buffer	Phosphate buffered solution, pH 7.4, containing 0.05% stabilizer and 50% glycerol.

Applications

WB	1:500-1:2000
-----------	--------------

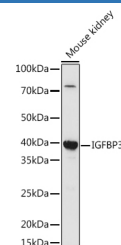
Data



Western blot analysis of extracts of various cell lines using IGFBP3 Polyclonal Antibody at 1:1000 dilution.

Observed-MV:40 kDa

Calculated-MV:31 kDa/32 kDa



Western blot analysis of extracts of various cell lines using IGFBP3 Polyclonal Antibody at 1:1000 dilution.

Observed-MV:40 kDa

Calculated-MV:31 kDa/32 kDa

Preparation & Storage

Storage	Store at -20°C Valid for 12 months. Avoid freeze / thaw cycles.
Shipping	The product is shipped with ice pack, upon receipt, store it immediately at the temperature recommended.

Background

This gene is a member of the insulin-like growth factor binding protein (IGFBP) family and encodes a protein with an IGFBP domain and a thyroglobulin type-I domain. The protein forms a ternary complex with insulin-like growth factor acid-labile subunit (IGFALS) and either insulin-like growth factor (IGF) I or II. In this form, it circulates in the plasma, prolonging the half-life of IGFs and altering their interaction with cell surface receptors. Alternate transcriptional splice variants, encoding different isoforms, have been characterized.

For Research Use Only