

Recombinant IKB alpha Monoclonal Antibody

catalog number: **E-AB-81430**

Note: Centrifuge before opening to ensure complete recovery of vial contents.

Description

Reactivity	Human;Rat
Immunogen	A synthetic peptide of human IKB alpha
Host	Rabbit
Isotype	IgG
Clone	R06-9E9
Purification	Affinity Purified
Buffer	50mM Tris-Glycine(pH 7.4), 0.15M NaCl, 40% Glycerol, 0.05% stabilizer and 0.05% protective protein.

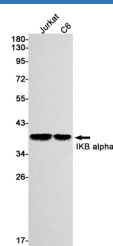
Applications

WB

Recommended Dilution

1:1000-1:2000

Data



Western blot detection of IKB alpha in Jurkat,C6 cell lysates using IKB alpha Rabbit mAb(1:1000 diluted).Predicted band size:36kDa.Observed band size:39kDa.

Observed-MW:39 kDa

Calculated-MW:36 kDa

Preparation & Storage

Storage

Store at -20°C Valid for 12 months. Avoid freeze / thaw cycles.

Shipping

The product is shipped with ice pack,upon receipt,store it immediately at the temperature recommended.

Background

Nuclear factor of kappa light polypeptide gene enhancer in B-cells inhibitor, alpha (NFKBIA, synonyms: IKBA, MAD-3, NFKBI). NFKB1 or NFKB2 is bound to REL, RELA, or RELB to form the NFKB complex. The NFKB complex is inhibited by I-kappa-B proteins (NFKBIA or NFKBIB), which inactivate NF-kappa-B by trapping it in the cytoplasm. Phosphorylation of serine residues on the I-kappa-B proteins by kinases (IKBKA, or IKBKB) marks them for destruction via the ubiquitination pathway, thereby allowing activation of the NF-kappa-B complex. Activated NFKB complex translocates into the nucleus and binds DNA at kappa-B-binding motifs such as 5-prime GGGRNYYCC 3-prime or 5-prime HGGARNYYCC 3-prime.

For Research Use Only