

Recombinant Human IRF5 Protein (His Tag)

Catalog Number: PKSH032603

Note: *Centrifuge before opening to ensure complete recovery of vial contents.*

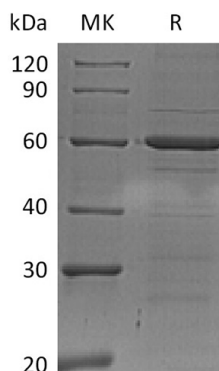
Description

Species	Human
Source	E.coli-derived Human IRF5 protein Met 1-Gln498, with an C-terminal His
Calculated MW	57.1 kDa
Observed MW	62 kDa
Accession	Q13568
Bio-activity	Not validated for activity

Properties

Purity	> 95 % as determined by reducing SDS-PAGE.
Concentration	Subject to label value.
Endotoxin	< 1.0 EU per µg of the protein as determined by the LAL method.
Storage	Store at < -20°C, stable for 6 months. Please minimize freeze-thaw cycles.
Shipping	This product is provided as liquid. It is shipped at frozen temperature with blue ice/ gel packs. Upon receipt, store it immediately at < - 20°C.
Formulation	Supplied as a 0.2 µm filtered solution of 20mM Tris-HCl, 150mM NaCl, 30% Glycerol, 1mM DTT, pH 8.0.

Data



> 95 % as determined by reducing SDS-PAGE.

Background

Interferon Regulatory Factor 5 (IRF5) is a member of the IRF family. It contains one IRF tryptophan pentad repeat DN A-binding domain. IRF5 shuttles between the nucleus and the cytoplasm. IRF5 can form homodimer when it is phosphorylated. IRF5 functions as a transcription factor involved in the induction of interferons IFNA and INFB and inflammatory cytokines upon virus infection. Genetic variations in IRF5 are associated with susceptibility to systemic lupus erythematosus type 10. In addition, the genetic variations will result in susceptibility to rheumatoid arthritis.

For Research Use Only

Toll-free: 1-888-852-8623
Web: www.elabscience.com

Tel: 1-832-243-6086
Email: techsupport@elabscience.com

Fax: 1-832-243-6017