

Recombinant Human EIF4E Protein

Catalog Number:PKSH032410



Note: Centrifuge before opening to ensure complete recovery of vial contents.

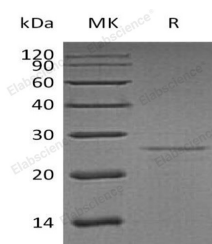
Description

Synonyms	Eukaryotic translation initiation factor 4E;eIF-4E;eIF-4F 25 kDa subunit;mRNA cap-binding protein;EIF4E;EIF4EL1;EIF4F
Species	Human
Expression Host	E.coli
Sequence	Met 1-Val217
Accession	AAH12611.1
Calculated Molecular Weight	25.1 kDa
Observed molecular weight	25 kDa
Tag	None

Properties

Purity	> 95 % as determined by reducing SDS-PAGE.
Endotoxin	< 1.0 EU per µg of the protein as determined by the LAL method.
Storage	Generally, lyophilized proteins are stable for up to 12 months when stored at -20 to -80°C. Reconstituted protein solution can be stored at 4-8°C for 2-7 days. Aliquots of reconstituted samples are stable at < -20°C for 3 months.
Shipping	This product is provided as lyophilized powder which is shipped with ice packs.
Formulation	Lyophilized from a 0.2 µm filtered solution of 20mM PB, 150mM NaCl, pH 7.4. Normally 5 % - 8 % trehalose, mannitol and 0.01% Tween80 are added as protectants before lyophilization. Please refer to the specific buffer information in the printed man
Reconstitution	Please refer to the printed manual for detailed information.

Data



> 95 % as determined by reducing SDS-PAGE.

Background

Eukaryotic translation initiation factor 4E is a 217 amino acids protein that belongs to the eukaryotic initiation factor 4E family. eIF4F is a multi-subunit complex, the composition of which varies with external and internal environmental conditions. It is composed of at least EIF4A, EIF4E and EIF4G1/EIF4G3. EIF4E is also known to interact with other partners. It can recognize and bind the 7-methylguanosine-containing mRNA cap during an early step in the initiation of protein synthesis and facilitates ribosome binding by inducing the unwinding of the mRNAs secondary structures.

For Research Use Only

A Reliable Research Partner in Life Science and Medicine

Toll-free: 1-888-852-8623

Web: www.elabscience.com

Tel: 1-832-243-6086

Email: techsupport@elabscience.com

Fax: 1-832-243-6017