

CPLX3 Polyclonal Antibody

Catalog Number:E-AB-53051



Note: Centrifuge before opening to ensure complete recovery of vial contents.

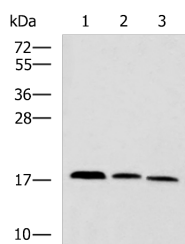
Description

Reactivity	Human, Mouse, Rat
Immunogen	Fusion protein of human CPLX3
Host	Rabbit
Isotype	IgG
Purification	Antigen affinity purification
Conjugation	Unconjugated
Formulation	PBS with 0.05% NaN ₃ and 40% Glycerol,pH7.4

Applications Recommended Dilution

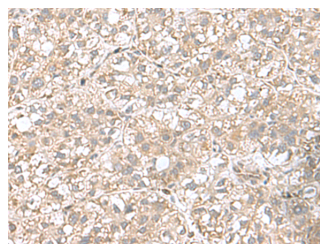
WB	1:1000-1:5000
IHC	1:50-1:200
ELISA	1:5000-1:10000

Data



Western blot analysis of Mouse kidney tissue Rat brain tissue Mouse liver tissue lysates using CPLX3 Polyclonal Antibody at dilution of 1:950

Observed Mw:Refer to figures
Calculated Mw:17 kDa



Immunohistochemistry of paraffin-embedded Human liver cancer tissue using CPLX3 Polyclonal Antibody at dilution of 1:65(×200)

Preparation & Storage

Storage Store at -20°C. Avoid freeze / thaw cycles.

Background

Positively regulates a late step in synaptic vesicle exocytosis.

For Research Use Only

A Reliable Research Partner in Life Science and Medicine

Toll-free: 1-888-852-8623

Web: www.elabscience.com

Tel: 1-832-243-6086

Email: techsupport@elabscience.com

Fax: 1-832-243-6017