

ATP5O Polyclonal Antibody

catalog number: E-AB-53090

Note: Centrifuge before opening to ensure complete recovery of vial contents.

Description

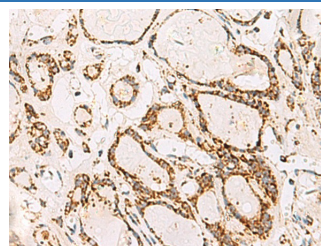
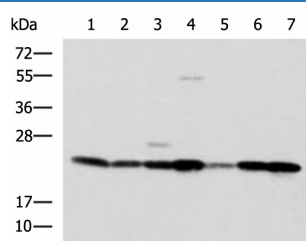
Reactivity	Human;Mouse
Immunogen	Fusion protein of human ATP5PO
Host	Rabbit
Isotype	IgG
Purification	Antigen affinity purification
Conjugation	Unconjugated
buffer	Phosphate buffered solution, pH 7.4, containing 0.05% stabilizer and 50% glycerol.

Applications

Recommended Dilution

WB	1:1000-1:5000
IHC	1:100-1:300

Data



Western blot analysis of SKOV3 HeLa cell Mouse liver tissue Mouse heart tissue Human placenta tissue HepG2 cell Human heart tissue lysates using ATP5O Polyclonal Antibody at dilution of 1:1250

Immunohistochemistry of paraffin-embedded Human thyroid cancer tissue using ATP5O Polyclonal Antibody at dilution of 1:90(×200)

Observed-MV:Refer to figures

Calculated-MV:23 kDa

Preparation & Storage

Storage	Store at -20°C Valid for 12 months. Avoid freeze / thaw cycles.
Shipping	The product is shipped with ice pack,upon receipt,store it immediately at the temperature recommended.

Background

The protein encoded by this gene is a component of the F-type ATPase found in the mitochondrial matrix. F-type ATPases are composed of a catalytic core and a membrane proton channel. The encoded protein appears to be part of the connector linking these two components and may be involved in transmission of conformational changes or proton conductance.

For Research Use Only