

# GCG Polyclonal Antibody

catalog number: E-AB-70318

**Note:** Centrifuge before opening to ensure complete recovery of vial contents.

## Description

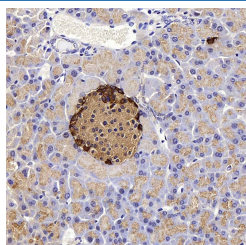
<b>Reactivity</b>	Mouse;Rat
<b>Immunogen</b>	KLH conjugated Synthetic peptide corresponding to Mouse Glucagon
<b>Host</b>	Rabbit
<b>Isotype</b>	IgG
<b>Purification</b>	Affinity purification
<b>Conjugation</b>	Unconjugated
<b>buffer</b>	Phosphate buffered solution, pH 7.4, containing 0.05% stabilizer, 1% protein protectant and 50% glycerol.

## Applications

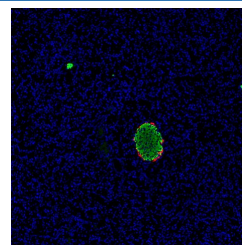
## Recommended Dilution

<b>IHC</b>	1:500-1:1000
<b>IF</b>	1:200-1:500

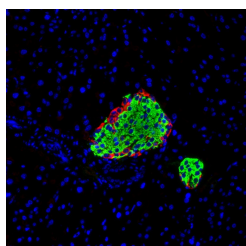
## Data



Immunohistochemistry analysis of paraffin-embedded mouse pancreas using GCG Polyclonal Antibody at dilution of 1:300.



Immunofluorescence analysis of paraffin-embedded Rat pancreas using GCG Polyclonal Antibody at dilution of 1:200. Red is labeled with glucagon antibody and green is labeled with insulin antibody.



Immunofluorescence analysis of paraffin-embedded Mouse pancreas using GCG Polyclonal Antibody at dilution of 1:200. Red is labeled with glucagon antibody and green is labeled with insulin antibody.

## Preparation & Storage

<b>Storage</b>	Store at -20°C Valid for 12 months. Avoid freeze / thaw cycles.
<b>Shipping</b>	The product is shipped with ice pack, upon receipt, store it immediately at the temperature recommended.

## Background

## For Research Use Only

## GCG Polyclonal Antibody

catalog number: E-AB-70318



The protein encoded by this gene is actually a preproprotein that is cleaved into four distinct mature peptides. One of these, glucagon, is a pancreatic hormone that counteracts the glucose-lowering action of insulin by stimulating glycogenolysis and gluconeogenesis. Glucagon is a ligand for a specific G-protein linked receptor whose signalling pathway controls cell proliferation. Two of the other peptides are secreted from gut endocrine cells and promote nutrient absorption through distinct mechanisms. Finally, the fourth peptide is similar to glicentin, an active enteroglucagon.

### For Research Use Only

A Reliable Research Partner in Life Science and Medicine  
Tel: 400-999-2100

Email: [techsupport@elabscience.cn](mailto:techsupport@elabscience.cn)

Web: [www.elabscience.cn](http://www.elabscience.cn)

Rev. V1.7