

# IL18 Polyclonal Antibody

Catalog Number: E-AB-14154

1 Publications

**Note:** Centrifuge before opening to ensure complete recovery of vial contents.

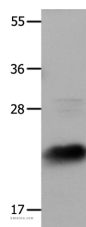
## Description

|                     |   |
|---------------------|---|
| <b>Reactivity</b>   | Human   |
| <b>Immunogen</b>    | Recombinant protein of human IL18                   |
| <b>Host</b>         | Rabbit  |
| <b>Isotype</b>      | IgG   |
| <b>Purification</b> | Affinity purification                               |
| <b>Conjugation</b>  | Unconjugated  |
| <b>Formulation</b>  | PBS with 0.05% sodium azide and 50% glycerol, PH7.4 |

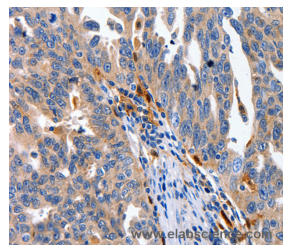
## Applications Recommended Dilution

|            |               |
|------------|---------------|
| <b>WB</b>  | 1:1000-1:2000 |
| <b>IHC</b> | 1:100-1:200   |

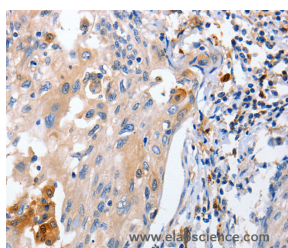
## Data



Western Blot analysis of HeLa cells using IL18 Polyclonal Antibody at dilution of 1:1350  
**Calculated Mw:22kDa**



Immunohistochemistry of paraffin-embedded Human ovarian cancer using IL18 Polyclonal Antibody at dilution of 1:100



Immunohistochemistry of paraffin-embedded Human cervical cancer using IL18 Polyclonal Antibody at dilution of 1:100

## Preparation & Storage

**Storage** Store at -20°C. Avoid freeze / thaw cycles.

## Background

The protein encoded by this gene is a proinflammatory cytokine that augments natural killer cell activity in spleen cells, and stimulates interferon gamma production in T-helper type I cells. Alternatively spliced transcript variants encoding different isoforms have been found for this gene

## For Research Use Only

A Reliable Research Partner in Life Science and Medicine

Toll-free: 1-888-852-8623

Web: [www.elabscience.com](http://www.elabscience.com)

Tel: 1-832-243-6086

Email: [techsupport@elabscience.com](mailto:techsupport@elabscience.com)

Fax: 1-832-243-6017