

## Recombinant Human NOTCH3 protein (His Tag)

**Catalog Number:** PDEH101022

**Note:** Centrifuge before opening to ensure complete recovery of vial contents.

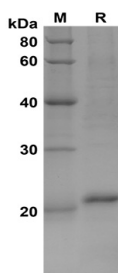
### Description

<b>Species</b>	Human
<b>Source</b>	E.coli-derived Human NOTCH3 protein Val1289-Cys1458, with an N-terminal His
<b>Calculated MW</b>	18.6 kDa
<b>Observed MW</b>	21 kDa
<b>Accession</b>	Q9UM47
<b>Bio-activity</b>	Not validated for activity

### Properties

<b>Purity</b>	> 90% as determined by reducing SDS-PAGE.
<b>Endotoxin</b>	< 10 EU/mg of the protein as determined by the LAL method
<b>Storage</b>	Generally, lyophilized proteins are stable for up to 12 months when stored at -20 to -80 °C. Reconstituted protein solution can be stored at 4-8°C for 2-7 days. Aliquots of reconstituted samples are stable at < -20°C for 3 months.
<b>Shipping</b>	This product is provided as lyophilized powder which is shipped with ice packs.
<b>Formulation</b>	Lyophilized from a 0.2 µm filtered solution in PBS with 5% Trehalose and 5% Mannitol.
<b>Reconstitution</b>	It is recommended that sterile water be added to the vial to prepare a stock solution of 0.5 mg/mL. Concentration is measured by UV-Vis.

### Data



SDS-PAGE analysis of Human NOTCH3 proteins, 2µg/lane of Recombinant Human NOTCH3 proteins was resolved with SDS-PAGE under reducing conditions, showing bands at 21 KD.

### Background

Human Notch-3 is part of the Notch family of type I transmembrane glycoproteins involved in a number of early-event developmental processes. The extracellular domain of Notch receptors interact with the extracellular domain of transmembrane ligands Jagged, Delta, and Serrate expressed on the surface of a neighboring cell. In both vertebrates and invertebrates, Notch signaling is important for specifying cell fates and for defining boundaries between different cell types.

### For Research Use Only

Toll-free: 1-888-852-8623  
Web: [www.elabscience.com](http://www.elabscience.com)

Tel: 1-832-243-6086  
Email: [techsupport@elabscience.com](mailto:techsupport@elabscience.com)

Fax: 1-832-243-6017