

## Recombinant Human BCL2 Protein(GST Tag)

**Catalog Number:** PDEH101111

**Note:** Centrifuge before opening to ensure complete recovery of vial contents.

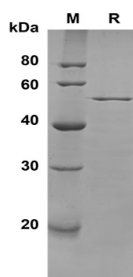
### Description

<b>Species</b>	Human
<b>Source</b>	E.coli-derived Human BCL2 protein Met1-Asp211, with an N-terminal GST
<b>Calculated MW</b>	49.2 kDa
<b>Observed MW</b>	50 kDa
<b>Accession</b>	P10415
<b>Bio-activity</b>	Not validated for activity

### Properties

<b>Purity</b>	> 95% as determined by reducing SDS-PAGE.
<b>Endotoxin</b>	< 10 EU/mg of the protein as determined by the LAL method
<b>Storage</b>	Generally, lyophilized proteins are stable for up to 12 months when stored at -20 to -80 °C. Reconstituted protein solution can be stored at 4-8°C for 2-7 days. Aliquots of reconstituted samples are stable at < -20°C for 3 months.
<b>Shipping</b>	This product is provided as lyophilized powder which is shipped with ice packs.
<b>Formulation</b>	Lyophilized from a 0.2 µm filtered solution in PBS with 5% Trehalose and 5% Mannitol.
<b>Reconstitution</b>	It is recommended that sterile water be added to the vial to prepare a stock solution of 0.5 mg/mL. Concentration is measured by UV-Vis.

### Data



SDS-PAGE analysis of Human BCL2 proteins, 2µg/lane of Recombinant Human BCL2 proteins was resolved with SDS-PAGE under reducing conditions, showing bands at 50 kDa

### Background

### For Research Use Only

Toll-free: 1-888-852-8623  
Web: [www.elabscience.com](http://www.elabscience.com)

Tel: 1-832-243-6086  
Email: [techsupport@elabscience.com](mailto:techsupport@elabscience.com)

Fax: 1-832-243-6017

BCL2-like 12 (BCL2L12) is a new member of the apoptosis-related BCL2 gene family, members of which are implicated in various malignancies. The mRNA expression of BCL2L12 may constitute a novel biomarker for the prediction of short-term relapse in nasopharyngeal carcinoma. BCL2L12 is a recently identified gene belonging to the BCL2 family, members of which are implicated in hematologic malignancies, including chronic lymphocytic leukemia (CLL). BCL2L12 can be considered as a new independent prognostic and chemotherapy response marker in AML. BCL2L12 mRNA expression may serve as a potential prognostic biomarker in tongue and/or larynx SCC, which principally constitute the great majority of HNSCC cases worldwide. BCL2L12 mRNA expression is a favorable prognostic marker of DFS for BC patients, suggesting its possible application as a novel prognostic indicator of this malignancy.