

# DCP2 Polyclonal Antibody

catalog number: E-AB-18644

**Note:** Centrifuge before opening to ensure complete recovery of vial contents.

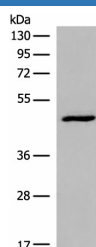
## Description

<b>Reactivity</b>	Human;Mouse
<b>Immunogen</b>	Fusion protein of human DCP2
<b>Host</b>	Rabbit
<b>Isotype</b>	IgG
<b>Purification</b>	Antigen affinity purification
<b>Conjugation</b>	Unconjugated
<b>buffer</b>	Phosphate buffered solution, pH 7.4, containing 0.05% stabilizer and 50% glycerol.

## Applications

<b>WB</b>	1:500-1:2000
<b>IHC</b>	1:30-1:150

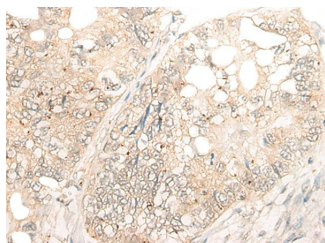
## Data



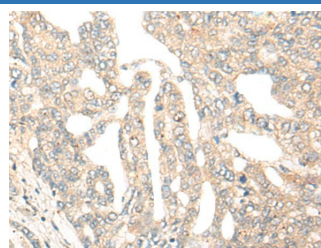
Western blot analysis of HL-60 cell lysate using DCP2 Polyclonal Antibody at dilution of 1:500

**Observed-MV:Refer to figures**

**Calculated-MV:48 kDa**



Immunohistochemistry of paraffin-embedded Human gastric cancer tissue using DCP2 Polyclonal Antibody at dilution of 1:45(×200)



Immunohistochemistry of paraffin-embedded Human liver cancer tissue using DCP2 Polyclonal Antibody at dilution of 1:45(×200)

## Preparation & Storage

<b>Storage</b>	Store at -20°C Valid for 12 months. Avoid freeze / thaw cycles.
<b>Shipping</b>	The product is shipped with ice pack,upon receipt,store it immediately at the temperature recommended.

## Background

The protein encoded by this gene is a key component of an mRNA-decapping complex required for degradation of mRNAs, both in normal mRNA turnover, and in nonsense-mediated mRNA decay (NMD). It removes the 7-methyl guanine cap structure from mRNA, prior to its degradation from the 5' end. Alternatively spliced transcript variants encoding different isoforms have been noted for this gene.

## For Research Use Only