

RAB6C Polyclonal Antibody

Catalog Number: E-AB-13547

Note: Centrifuge before opening to ensure complete recovery of vial contents.

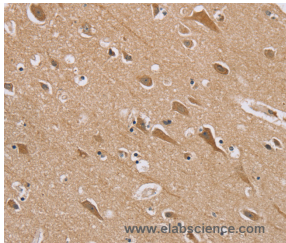
Description

Reactivity	Human
Immunogen	Synthetic peptide of human RAB6C
Host	Rabbit
Isotype	IgG
Purification	Affinity purification
Conjugation	Unconjugated
Formulation	PBS with 0.05% sodium azide and 50% glycerol, PH7.4

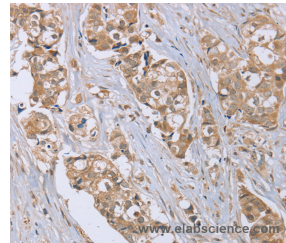
Applications Recommended Dilution

IHC	1:50-1:200
------------	------------

Data



Immunohistochemistry of paraffin-embedded Human brain tissue using RAB6C Polyclonal Antibody at dilution 1:45



Immunohistochemistry of paraffin-embedded Human breast cancer tissue using RAB6C Polyclonal Antibody at dilution 1:45

Preparation & Storage

Storage Store at -20°C. Avoid freeze / thaw cycles.

Background

Ras-related protein Rab-6C is a protein that in humans is encoded by the RAB6C gene. May be involved in the regulation of centrosome duplication and cell cycle progression. Highest levels are found in fetal and adult brain, prostate, testis and spinal cord.

For Research Use Only

A Reliable Research Partner in Life Science and Medicine

Toll-free: 1-888-852-8623

Web: www.elabscience.com

Tel: 1-832-243-6086

Email: techsupport@elabscience.com

Fax: 1-832-243-6017