

Recombinant IGFBP7 Monoclonal Antibody

catalog number: **AN300065P**

Note: Centrifuge before opening to ensure complete recovery of vial contents.

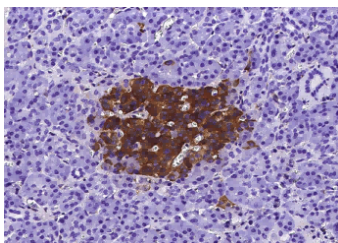
Description

| | |
|---------------------|----------------------------------|
| Reactivity | Human |
| Immunogen | Recombinant Human IGFBP7 protein |
| Host | Rabbit |
| Isotype | IgG |
| Clone | 6A8 |
| Purification | Protein A |
| Buffer | 0.2 µm filtered solution in PBS |

Applications Recommended Dilution

| | |
|--------------|-------------|
| IHC-P | 1:100-1:500 |
|--------------|-------------|

Data



Immunohistochemistry of paraffin-embedded human pancreas using IGFBP7 Monoclonal Antibody at dilution of 1:200.

Preparation & Storage

| | |
|-----------------|--|
| Storage | This antibody can be stored at 2°C-8°C for one month without detectable loss of activity. Antibody products are stable for twelve months from date of receipt when stored at -20°C to -80°C. Preservative-Free. Avoid repeated freeze-thaw cycles. |
| Shipping | Ice bag |

Background

This gene encodes a member of the insulin-like growth factor (IGF)-binding protein (IGFBP) family. IGFBPs bind IGFs with high affinity, and regulate IGF availability in body fluids and tissues and modulate IGF binding to its receptors. This protein binds IGF-I and IGF-II with relatively low affinity, and belongs to a subfamily of low-affinity IGFBPs. It also stimulates prostacyclin production and cell adhesion. Alternatively spliced transcript variants encoding different isoforms have been described for this gene, and one variant has been associated with retinal arterial macroaneurysm (PMID:21835307).

For Research Use Only