

## PE Anti-Mouse CX3CR1 Antibody[SA011F11]

**Catalog Number:** AN01022D

**Note:** Centrifuge before opening to ensure complete recovery of vial contents.

### Description

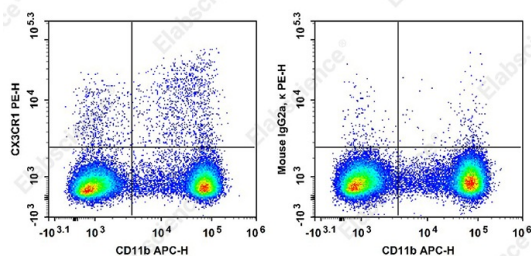
<b>Reactivity</b>	Mouse
<b>Host</b>	Mouse
<b>Isotype</b>	Mouse IgG2a, $\kappa$
<b>Clone No.</b>	SA011F11
<b>Isotype Control</b>	PE Mouse IgG2a, $\kappa$ Isotype Control[C1.18.4] [Product E-AB-F09802D]
<b>Conjugation</b>	PE
<b>Conjugation Information</b>	PE is designed to be excited by the Blue (488 nm), Green (532 nm) and Yellow-Green (561 nm) lasers and detected using an optical filter centered near 575 nm (e.g., a 585/42 nm bandpass filter).
<b>Storage Buffer</b>	Phosphate buffered solution, pH 7.2, containing 0.09% stabilizer.

### Applications

### Recommended usage

<b>FCM</b>	Each lot of this antibody is quality control tested by flow cytometric analysis. <b>The amount of the reagent is suggested to be used 5 <math>\mu</math>L of antibody per test (million cells in 100 <math>\mu</math>L staining volume or per 100 <math>\mu</math>L of whole blood).</b> Please check your vial before the experiment. Since applications vary, the appropriate dilutions must be determined for individual use.
------------	--

### Data



Staining of C57BL/6 murine bone marrow cells with APC Anti-Mouse/Human CD11b Antibody and PE Anti-Mouse CX3CR1 Antibody[SA011F11] (left) or FITC Mouse IgG2a,  $\kappa$  Isotype Control (right). Total viable cells were used for analysis.

### Preparation & Storage

<b>Storage</b>	Keep as concentrated solution. This product can be stored at 2-8°C for 12 months. Please protected from prolonged exposure to light and do not freeze.
<b>Shipping</b>	Ice bag

### Antigen Information

<b>Alternate Names</b>	Chemokine (C-X3-C motif) receptor 1;Fractalkine receptor;GPR13;CCRL1;CMKBRL1;CMKDR1;V28
------------------------	---

### For Research Use Only

Toll-free: 1-888-852-8623  
Web: [www.elabscience.com](http://www.elabscience.com)

Tel: 1-832-243-6086  
Email: [techsupport@elabscience.com](mailto:techsupport@elabscience.com)

Fax: 1-832-243-6017

Rev. V1.2

**Uniprot ID**

Q9Z0D9

**Gene ID**

13051

**Background**

CX3CR1 is a 40 kD, G-protein coupled receptor, with seven transmembrane regions. CX3CR1 is expressed by resident and alternatively activated macrophages (M2), a subset of monocytes, dendritic cells (DCs), NK cells, a subset of memory T cells, and mast cells. CX3CR1 is involved in cell recruitment during inflammation and participates in cell adhesion and extravasation from blood vessels. Its ligand is CX3CL1, also known as fractalkine or neurotactin. CX3CR1 is also a coreceptor for HIV1 and variations in this gene leads to increased susceptibility to HIV. In the brain, it is expressed by glial cells, which interact with CX3CL1 expressed by neurons.