

SNP23 Polyclonal Antibody

catalog number: **E-AB-40243**

Note: Centrifuge before opening to ensure complete recovery of vial contents.

Description

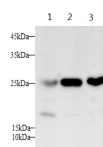
Reactivity	Human
Immunogen	Recombinant Human SNP23 protein expressed by E.coli
Host	Rabbit
Isotype	IgG
Purification	Antigen Affinity Purification
Buffer	PBS with 0.05% Proclin300, 1% protective protein and 50% glycerol, pH7.4

Applications

Recommended Dilution

WB	1:250-1:500
IHC	1:50-1:200

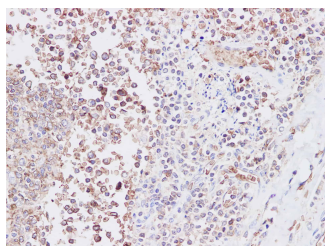
Data



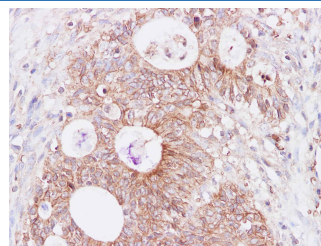
Western blot with SNP23 Polyclonal antibody at dilution of 1:1000. lane 1: Hep G2 whole cell lysate, lane 2: 293 whole cell lysate, lane 3: Jurkat whole cell lysate

Observed-MW: 23 kDa

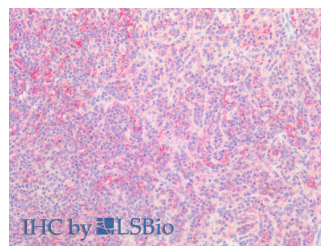
Calculated-MW: 23 kDa



Immunohistochemistry of paraffin-embedded human tonsil using SNAP23 Polyclonal Antibody at dilution of 1:200



Immunohistochemistry of paraffin-embedded Human colon using SNAP23 Polyclonal Antibody at dilution of 1:200



Immunohistochemistry of paraffin-embedded Human spleen using SNAP23 Polyclonal Antibody at dilution of 1:200 (Elabscience Product Detected by Lifespan).

Preparation & Storage

Storage	Store at -20°C Valid for 12 months. Avoid freeze / thaw cycles.
Shipping	The product is shipped with ice pack, upon receipt, store it immediately at the temperature recommended.

Background

Specificity of vesicular transport is regulated, in part, by the interaction of a vesicle-associated membrane protein termed synaptobrevin/VAMP with a target compartment membrane protein termed syntaxin. These proteins, together with SNAP25 (synaptosome-associated protein of 25 kDa), form a complex which serves as a binding site for the general membrane fusion machinery.

For Research Use Only

Toll-free: 1-888-852-8623
Web: www.elabscience.com

Tel: 1-832-243-6086
Email: techsupport@elabscience.com

Fax: 1-832-243-6017

Rev. V2.3