

p70 S6 Kinase 1 Polyclonal Antibody

catalog number: E-AB-93156

Note: Centrifuge before opening to ensure complete recovery of vial contents.

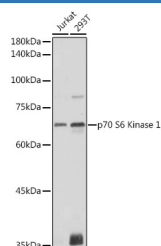
Description

Reactivity	Human;Mouse;Rat
Immunogen	A synthetic peptide of human P70 S6K
Host	Rabbit
Isotype	IgG
Purification	Affinity purification
Buffer	Phosphate buffered solution, pH 7.4, containing 0.05% stabilizer and 50% glycerol.

Applications

Applications	Recommended Dilution
WB	1:500-1:2000
IHC	1:50-1:200
IF	1:50-1:200

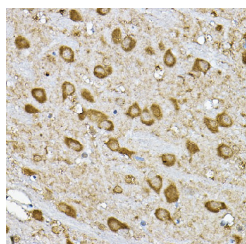
Data



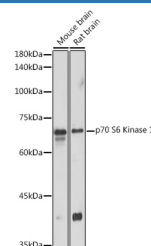
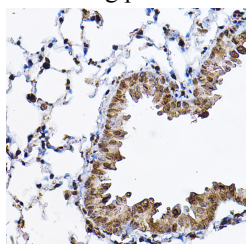
Western blot analysis of extracts of various cell lines using p70 S6 Kinase 1 Polyclonal Antibody at 1:1000 dilution.

Observed-MW:70 kDa

Calculated-MW:51 kDa/52 kDa/56 kDa/59 kDa



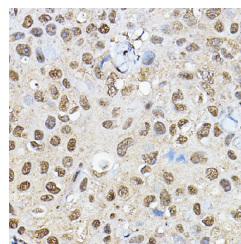
Immunohistochemistry of paraffin-embedded rat brain using p70 S6 Kinase 1 Polyclonal Antibody at dilution of 1:100 (40x lens). Perform high pressure antigen retrieval with 10 mM citrate buffer pH 6.0 before commencing with IHC staining protocol.



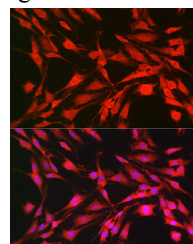
Western blot analysis of extracts of various cell lines using p70 S6 Kinase 1 Polyclonal Antibody at 1:1000 dilution.

Observed-MW:70 kDa

Calculated-MW:51 kDa/52 kDa/56 kDa/59 kDa

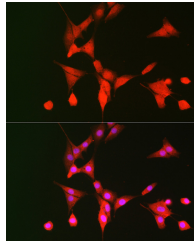


Immunohistochemistry of paraffin-embedded human breast cancer using p70 S6 Kinase 1 Polyclonal Antibody at dilution of 1:100 (40x lens). Perform high pressure antigen retrieval with 10 mM citrate buffer pH 6.0 before commencing with IHC staining protocol



For Research Use Only

Immunohistochemistry of paraffin-embedded mouse lung using p70 S6 Kinase 1 Polyclonal Antibody at dilution of 1:100 (40x lens). Perform high pressure antigen retrieval with 10 mM citrate buffer pH 6.0 before commencing with IHC staining protocol.



Immunofluorescence analysis of C6 cells using p70 S6 Kinase 1 Polyclonal Antibody at dilution of 1:100 (40x lens).
Blue: DAPI for nuclear staining.

Immunofluorescence analysis of NIH/3T3 cells using p70 S6 Kinase 1 Polyclonal Antibody at dilution of 1:100 (40x lens).
Blue: DAPI for nuclear staining.

Preparation & Storage

Storage

Store at -20°C Valid for 12 months. Avoid freeze / thaw cycles.

Shipping

The product is shipped with ice pack, upon receipt, store it immediately at the temperature recommended.

Background

This gene encodes a member of the ribosomal S6 kinase family of serine/threonine kinases. The encoded protein responds to mTOR (mammalian target of rapamycin) signaling to promote protein synthesis, cell growth, and cell proliferation. Activity of this gene has been associated with human cancer. Alternatively spliced transcript variants have been observed. The use of alternative translation start sites results in isoforms with longer or shorter N-termini which may differ in their subcellular localizations. There are two pseudogenes for this gene on chromosome 17.

For Research Use Only