

# Phospho-FOXO3 (Ser253) Polyclonal Antibody

Catalog Number:E-AB-20878



**Note:** Centrifuge before opening to ensure complete recovery of vial contents.

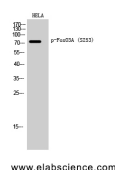
## Description

<b>Reactivity</b>	Human,Mouse,Rat
<b>Immunogen</b>	Synthesized peptide derived from human FoxO3A around the phosphorylation site of Ser253
<b>Host</b>	Rabbit
<b>Isotype</b>	IgG
<b>Purification</b>	Affinity purification
<b>Conjugation</b>	Unconjugated
<b>Formulation</b>	PBS with 0.02% sodium azide, 0.5% protective protein and 50% glycerol, pH7.4

## Applications Recommended Dilution

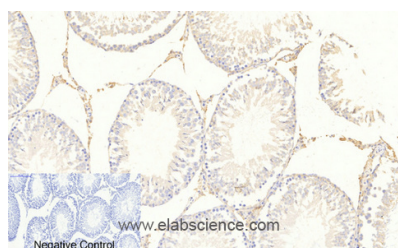
<b>WB</b>	1:500-1:2000
<b>IHC</b>	1:100-1:300
<b>IF</b>	1:200-1:1000
<b>ELISA</b>	1:20000

## Data



Western Blot analysis of HeLa cells using Phospho-FOXO3 (Ser253) Polyclonal Antibody at dilution of 1:2000

**Observed Mw:97kDa**  
**Calculated Mw:71kDa**



Immunohistochemistry of paraffin-embedded Rat testis tissue using Phospho-FOXO3 (Ser253) Polyclonal Antibody at dilution of 1:200

## Preparation & Storage

**Storage** Store at -20°C. Avoid freeze / thaw cycles.

## Background

Transcriptional activator which triggers apoptosis in the absence of survival factors, including neuronal cell death upon oxidative stress. Recognizes and binds to the DNA sequence 5'-[AG]TAAA[TC]A-3'.

## For Research Use Only

A Reliable Research Partner in Life Science and Medicine

Toll-free: 1-888-852-8623

Web: [www.elabscience.com](http://www.elabscience.com)

Tel: 1-832-243-6086

Email: [techsupport@elabscience.com](mailto:techsupport@elabscience.com)

Fax: 1-832-243-6017