

## FITC Anti-Mouse CD326/EpCAM Antibody[G8.8]

Catalog Number: E-AB-F1181C

Note: Centrifuge before opening to ensure complete recovery of vial contents.

### Description

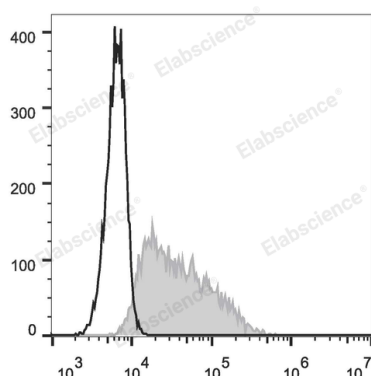
Reactivity	Mouse
Host	Rat
Isotype	Rat IgG2a, $\kappa$
Clone No.	G8.8
Isotype Control	FITC Rat IgG2a, $\kappa$ Isotype Control[2A3] [Product E-AB-F09832C]
Conjugation	FITC
Conjugation Information	FITC is designed to be excited by the Blue laser (488 nm) and detected using an optical filter centered near 530 nm (e.g., a 525/40 nm bandpass filter).
Storage Buffer	Phosphate buffered solution, pH 7.2, containing 0.09% stabilizer.

### Applications

### Recommended usage

FCM	Each lot of this antibody is quality control tested by flow cytometric analysis. <b>The amount of the reagent is suggested to be used 5 <math>\mu</math>L of antibody per test (million cells in 100 <math>\mu</math>L staining volume or per 100 <math>\mu</math>L of whole blood).</b> Please check your vial before the experiment. Since applications vary, the appropriate dilutions must be determined for individual use.
-----	--

### Data



4T-1 cells are stained with FITC Anti-Mouse CD326 Antibody (filled gray histogram). Unstained cells (empty black histogram) are used as control.

### Preparation & Storage

Storage	Keep as concentrated solution. This product can be stored at 2-8°C for 24 months. Please protected from prolonged exposure to light and do not freeze.
Shipping	Ice bag

### Antigen Information

Alternate Names	EGP314;Ep-CAM;EpCAM;Megp314;Tacstd1
Uniprot ID	Q99JW5
Gene ID	17075

### For Research Use Only

## **Background**

EpCAM (CD326) mediates calcium-independent homophilic cell to cell adhesion. It may also function as a growth factor receptor. It is thought to be involved in maintaining cells in position during proliferation. Expression of EpCAM seems to correlate inversely with the level of E-cadherin (CD324). EpCAM is considered important in tumor biology.