

GCGR Polyclonal Antibody

catalog number: E-AB-90226

Note: Centrifuge before opening to ensure complete recovery of vial contents.

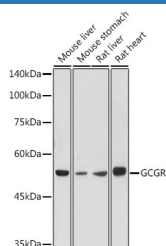
Description

| | |
|---------------------|--|
| Reactivity | Human;Mouse;Rat |
| Immunogen | A synthetic peptide of human GCGR |
| Host | Rabbit |
| Isotype | IgG |
| Purification | Affinity purification |
| Buffer | Phosphate buffered solution, pH 7.4, containing 0.05% stabilizer and 50% glycerol. |

Applications

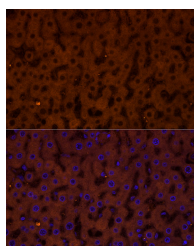
| | |
|-----------|--------------|
| WB | 1:500-1:2000 |
| IF | 1:50-1:200 |

Data

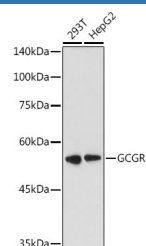


Western blot analysis of extracts of various cell lines using GCGR Polyclonal Antibody at 1:1000 dilution.

Observed-MW:54 kDa
Calculated-MW:54 kDa



Immunofluorescence analysis of rat liver cells using GCGR Polyclonal Antibody at dilution of 1:50 (40x lens). Blue: DAPI for nuclear staining.



Western blot analysis of extracts of various cell lines using GCGR Polyclonal Antibody at 1:1000 dilution.

Observed-MW:54 kDa
Calculated-MW:54 kDa

Preparation & Storage

| | |
|-----------------|--|
| Storage | Store at -20°C Valid for 12 months. Avoid freeze / thaw cycles. |
| Shipping | The product is shipped with ice pack, upon receipt, store it immediately at the temperature recommended. |

Background

The protein encoded by this gene is a glucagon receptor that is important in controlling blood glucose levels. Defects in this gene are a cause of non-insulin-dependent diabetes mellitus (NIDDM).

For Research Use Only