

Recombinant Human BCAM Protein(Fc Tag)

Catalog Number: PDMH100307



Note: Centrifuge before opening to ensure complete recovery of vial contents.

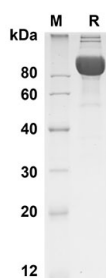
Description

Species	Human
Source	Mammalian-derived Human BCAM proteins Glu32-Ala547,with an C-terminal Fc
Mol_Mass	81.6 kDa
Accession	P50895
Bio-activity	Not validated for activity

Properties

Purity	> 90% as determined by reducing SDS-PAGE.
Endotoxin	< 1.0 EU/mg of the protein as determined by the LAL method
Storage	Generally, lyophilized proteins are stable for up to 12 months when stored at -20 to -80 °C. Reconstituted protein solution can be stored at 4-8°C for 2-7 days. Aliquots of reconstituted samples are stable at < -20°C for 3 months.
Shipping	This product is provided as lyophilized powder which is shipped with ice packs.
Formulation	Lyophilized from a 0.2 µm filtered solution in PBS with 5% Trehalose and 5% Mannitol.
Reconstitution	It is recommended that sterile water be added to the vial to prepare a stock solution of 0.5 mg/mL. Concentration is measured by UV-Vis.

Data



SDS-PAGE analysis of Human BCAM proteins , 2µg/lane of

Recombinant Human BCAM proteins was resolved with SDS-PAGE under reducing conditions , showing bands at 90

KD

Background

For Research Use Only

A Reliable Research Partner in Life Science and Medicine
Tel:400-999-2100

Email:techsupport@elabscience.cn

Web:www.elabscience.cn

Rev. V1.5

Recombinant Human BCAM Protein(Fc Tag)

Catalog Number: PDMH100307



The Lutheran (Lu) blood group and basal cell adhesion molecule (BCAM) antigens are both carried by 2 glycoprotein isoforms of the immunoglobulin superfamily representing receptors for the laminin alpha(5) chain. It is a transmembrane receptor with five immunoglobulin-like domains in its extracellular region, and is therefore classified as a member of the immunoglobulin (Ig) gene family. In addition to red blood cells, Lu/BCAM proteins are expressed in endothelial cells of vascular capillaries and in epithelial cells of several tissues. BCAM/LU has a wide tissue distribution with a predominant expression in the basal layer of the epithelium and the endothelium of blood vessel walls. As designated as CD239 recently, BCAM and LU share a significant sequence similarity with the CD146 (MUC18) and CD166, and themselves are adhesion molecules that bind laminin with high affinity. Laminins are found in all basement membranes and are involved in cell differentiation, adhesion, migration, and proliferation. BCAM is upregulated following malignant transformation of some cell types in vivo and in vitro, thus being a candidate molecule involved in tumor progression. In addition, BCAM interacts with integrin in sickle red cells, and thus may potentially play a role in vaso-occlusive episodes.

For Research Use Only

A Reliable Research Partner in Life Science and Medicine
Tel:400-999-2100

Email:techsupport@elabscience.cn

Web:www.elabscience.cn

Rev. V1.5