

Bcl-2 Polyclonal Antibody

catalog number: E-AB-60788

Note: Centrifuge before opening to ensure complete recovery of vial contents.

Description

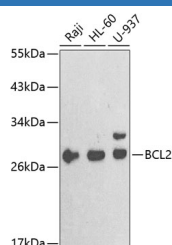
Reactivity	Human;Mouse;Rat
Immunogen	A synthetic peptide of human Bcl-2 (NP_000624.2).
Host	Rabbit
Isotype	IgG
Purification	Affinity purification
Conjugation	Unconjugated
buffer	Phosphate buffered solution, pH 7.4, containing 0.05% stabilizer and 50% glycerol.

Applications

Recommended Dilution

WB	1:500-1:1000
IF	1:50-1:100

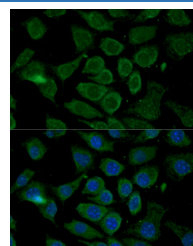
Data



Western blot analysis of extracts of various cell lines using Bcl-2 Polyclonal Antibody at dilution of 1:1000.

Observed-MV:27 kDa

Calculated-MV:22 kDa/26 kDa



Immunofluorescence analysis of L929 cells using Bcl-2 Polyclonal Antibody at dilution of 1:100. Blue: DAPI for nuclear staining.

Preparation & Storage

Storage	Store at -20°C Valid for 12 months. Avoid freeze / thaw cycles.
Shipping	The product is shipped with ice pack, upon receipt, store it immediately at the temperature recommended.

Background

This gene encodes an integral outer mitochondrial membrane protein that blocks the apoptotic death of some cells such as lymphocytes. Constitutive expression of BCL2, such as in the case of translocation of BCL2 to Ig heavy chain locus, is thought to be the cause of follicular lymphoma. Alternative splicing results in multiple transcript variants.

For Research Use Only