

## CD163 Polyclonal Antibody(Capture/Detector)

catalog number: AN000860P

**Note:** Centrifuge before opening to ensure complete recovery of vial contents.

### Description

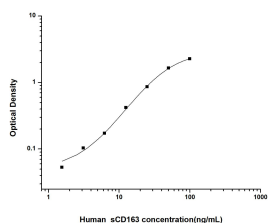
<b>Reactivity</b>	Human
<b>Immunogen</b>	Recombinant Human CD163 protein expressed by Mammalian
<b>Host</b>	Rabbit
<b>Isotype</b>	Rabbit IgG
<b>Purification</b>	Antigen Affinity Purification
<b>Conjugation</b>	Unconjugated
<b>Buffer</b>	Phosphate buffered solution, pH 7.2, containing 0.05% proclin 300.

### Applications

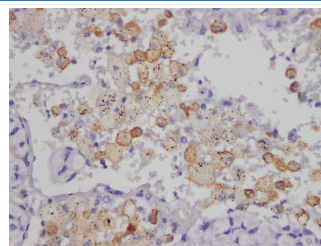
### Recommended Dilution

<b>ELISA Capture</b>	2-8 µg/mL
<b>ELISA Detector</b>	0.1-0.4 µg/mL
<b>IHC</b>	1:500-1:1000

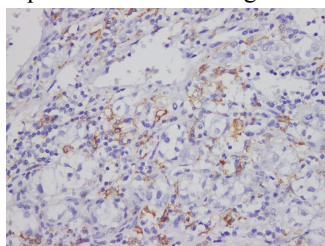
### Data



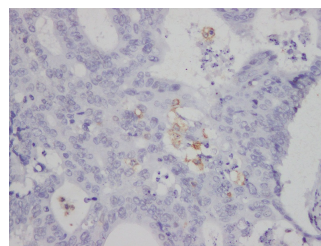
Sandwich ELISA-Recombinant Human CD163 protein standard curve. Background subtracted standard curve using CD163 antibody(AN000860P)(Capture), CD163 antibody(AN000860P)(Detector) in sandwich ELISA. The reference range value for Recombinant Human CD163 protein is 1.56-100 ng/mL.



Immunohistochemistry of paraffin-embedded Human lung cancer using CD163 Polyclonal Antibody at dilution of 1:1200.



Immunohistochemistry of paraffin-embedded Human liver cancer using CD163 Polyclonal Antibody at dilution of 1:1200.



Immunohistochemistry of paraffin-embedded Human colon carcinoma using CD163 Polyclonal Antibody at dilution of 1:1200.

### Preparation & Storage

<b>Storage</b>	Store at 4°C valid for 12 months or -20°C valid for long term storage, avoid freeze / thaw cycles.
<b>Shipping</b>	The product is shipped with ice pack, upon receipt, store it immediately at the temperature recommended.

### For Research Use Only

## Background

The protein encoded by this gene is a member of the scavenger receptor cysteine-rich (SRCR) superfamily, and is exclusively expressed in monocytes and macrophages. It functions as an acute phase-regulated receptor involved in the clearance and endocytosis of hemoglobin/haptoglobin complexes by macrophages, and may thereby protect tissues from free hemoglobin-mediated oxidative damage. This protein may also function as an innate immune sensor for bacteria and inducer of local inflammation. Alternatively spliced transcript variants encoding different isoforms have been described for this gene.