

SLC32A1 Polyclonal Antibody

catalog number: E-AB-16065

Note: Centrifuge before opening to ensure complete recovery of vial contents.

Description

Reactivity	Human;Mouse;Rat
Immunogen	Synthetic peptide of human SLC32A1
Host	Rabbit
Isotype	IgG
Purification	Affinity purification
Buffer	Phosphate buffered solution, pH 7.4, containing 0.05% stabilizer and 50% glycerol.

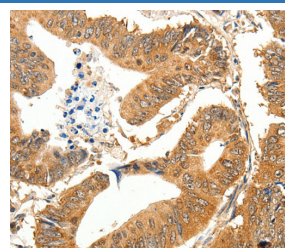
Applications

Applications	Recommended Dilution
WB	1:500-1:2000
IHC	1:50-1:200

Data



Western Blot analysis of Mouse eye tissue using SLC32A1 Polyclonal Antibody at dilution of 1:500
Calculated-MV:57 kDa



Immunohistochemistry of paraffin-embedded Human colon cancer using SLC32A1 Polyclonal Antibody at dilution of 1:35

Preparation & Storage

Storage	Store at -20°C Valid for 12 months. Avoid freeze / thaw cycles.
Shipping	The product is shipped with ice pack, upon receipt, store it immediately at the temperature recommended.

Background

Vesicular inhibitory amino acid transporter is a protein that in humans is encoded by the SLC32A1 gene. The protein encoded by this gene is an integral membrane protein involved in gamma-aminobutyric acid (GABA) and glycine uptake into synaptic vesicles. The encoded protein is a member of amino acid/polyamine transporter family II.

For Research Use Only