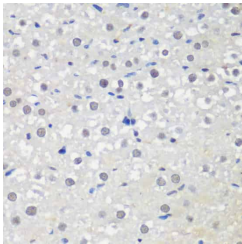
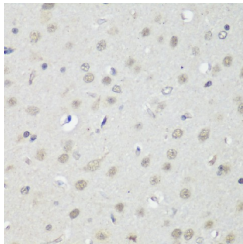
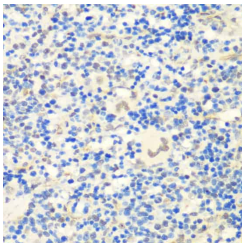
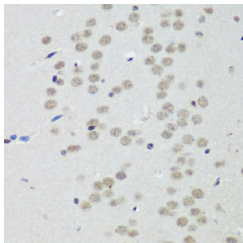
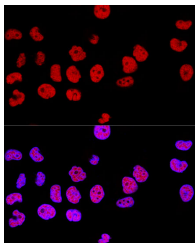
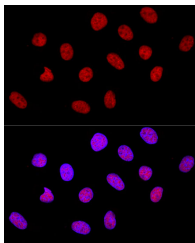


## CTCF Polyclonal Antibody

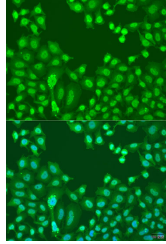
**catalog number: E-AB-64522**

**Note:** Centrifuge before opening to ensure complete recovery of vial contents.

Description	
<b>Reactivity</b>	Human;Mouse;Rat
<b>Immunogen</b>	Recombinant fusion protein of human CTCF (NP_006556.1).
<b>Host</b>	Rabbit
<b>Isotype</b>	IgG
<b>Purification</b>	Affinity purification
<b>Buffer</b>	Phosphate buffered solution, pH 7.4, containing 0.05% stabilizer and 50% glycerol.
Applications	Recommended Dilution
IHC	1:50-1:200
IF	1:50-1:200

Data	
 <p>Immunohistochemistry of paraffin-embedded Rat liver using CTCF Polyclonal Antibody at dilution of 1:200 (40x lens).</p>	 <p>Immunohistochemistry of paraffin-embedded Rat brain using CTCF Polyclonal Antibody at dilution of 1:200 (40x lens).</p>
 <p>Immunohistochemistry of paraffin-embedded Rat spleen using CTCF Polyclonal Antibody at dilution of 1:200 (40x lens).</p>	 <p>Immunohistochemistry of paraffin-embedded Mouse brain using CTCF Polyclonal Antibody at dilution of 1:200 (40x lens).</p>
 <p>Confocal immunofluorescence analysis of HeLa cells using CTCF Polyclonal Antibody at dilution of 1:100. Blue: DAPI for nuclear staining.</p>	 <p>Confocal immunofluorescence analysis of U-2 OS cells using CTCF Polyclonal Antibody at dilution of 1:100. Blue: DAPI for nuclear staining.</p>

### For Research Use Only



Immunofluorescence analysis of U2OS cells using CTCF Polyclonal Antibody at dilution of 1:100. Blue: DAPI for nuclear staining.

## Preparation & Storage

**Storage**

Store at -20°C Valid for 12 months. Avoid freeze / thaw cycles.

**Shipping**

The product is shipped with ice pack, upon receipt, store it immediately at the temperature recommended.

## Background

This gene is a member of the BORIS + CTCF gene family and encodes a transcriptional regulator protein with 11 highly conserved zinc finger (ZF) domains. This nuclear protein is able to use different combinations of the ZF domains to bind different DNA target sequences and proteins. Depending upon the context of the site, the protein can bind a histone acetyltransferase (HAT)-containing complex and function as a transcriptional activator or bind a histone deacetylase (HDAC)-containing complex and function as a transcriptional repressor. If the protein is bound to a transcriptional insulator element, it can block communication between enhancers and upstream promoters, thereby regulating imprinted expression. Mutations in this gene have been associated with invasive breast cancers, prostate cancers, and Wilms' tumors. Alternatively spliced transcript variants encoding different isoforms have been found for this gene.

## For Research Use Only